

CLIENT
**TOWN OF SURPSIDE
 COMMUNITY CENTER**
 9301 Collins Avenue, Surfside, Florida 33154



DESIGNER
SPILLIS CANDELA DMJM
 800 DOUGLAS ENTRANCE, SUITE 200
 CORAL GABLES, FL 33134
 T: 305-444-6653
 F: 305-444-3580
 www.spilliscondeladmj.com
 FLORIDA LICENSE AA0003298

CONSULTANTS
 LANDSCAPE ARCHITECTURE
SAVINO & MILLER DESIGN STUDIO
 1245 NE 5TH AVENUE, MIAMI, FLORIDA 33136
 TEL: (305) 897-9922 FAX: (305) 897-9923
 ESTIMATING CONSULTANT
ONS CONSTRUCTION MANAGEMENT SERVICES
 9199 NW 57TH STREET, MIAMI, FLORIDA 33147
 TEL: (954) 481-1811 FAX: (954) 472-3142
 COASTAL CONTRIBUTION
EDGC CORPORATION
 7445 SW 27TH AVENUE, MIAMI, FLORIDA 33156
 TEL: (305) 898-4100 FAX: (305) 898-4180
 FOOD SERVICES CONSULTANT
STARKS DESIGN INTERNATIONAL
 1900 S.W. 12TH AVENUE, MIAMI, FLORIDA 33135
 TEL: (305) 315-3555 FAX: (305) 728-3013
 POOL CONSULTANT
AQUADYNAMICS, INC.
 5000 SW 29TH AVENUE, SUITE 202, MIAMI, FLORIDA 33155
 TEL: (305) 667-8875 FAX: (305) 662-0022
 LEED CONSULTANT
SPINNAKER GROUP, INC.
 501 SPINNAKER, WESTON, FL 33326
 TEL: (954) 347-0867 FAX: (954) 217-3814

PROFESSIONAL OF RECORD: JESUS CRUZ
 DISCIPLINE: ARCHITECTURE
 REGISTRATION NO. AR0006906

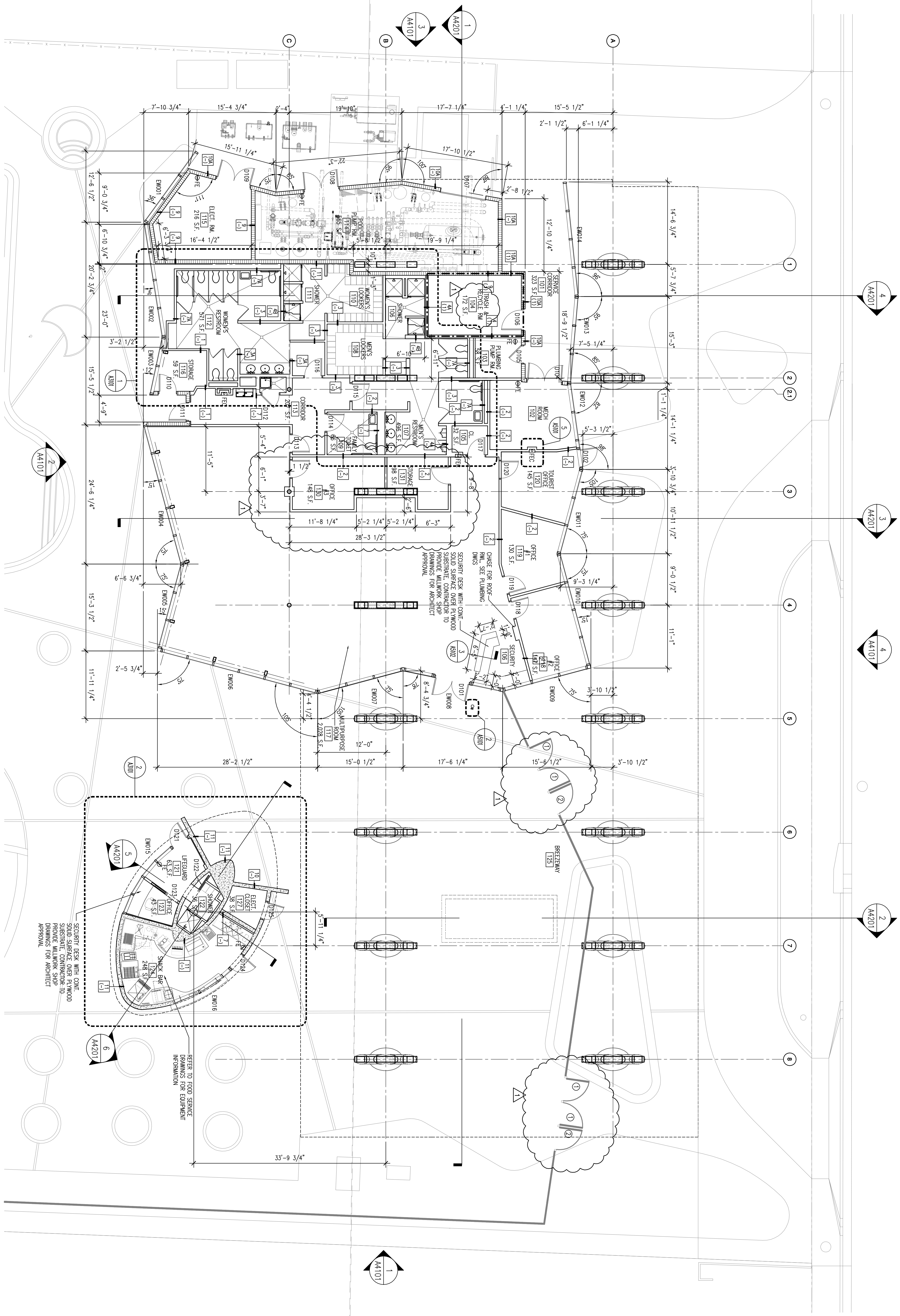
ISSUE	DATE	DESCRIPTION
Δ	03-01-10	CITY REVIEW COMMENTS

MARK	DATE	DESCRIPTION
PROJECT NO:		60028604
DRAWN BY:		
CHECKED BY:		
DATE:		10-22-2009
KEY PLAN		

SHEET TITLE
GROUND FLOOR PLAN

A2.2.01

© 2009 DMJM+H, Inc. Rev. 2003-1



PLAN NOTES
 ① FINISH HARDWARE DEVICES SHALL BE PROVIDED BY THE CLIENT. REFER TO LANDSCAPE DRAWINGS FOR DATE INFO.
 ② TOP LATCH DEVICE SHALL BE PROVIDED ON ALL EXTERIOR DOORS. SEE LANDSCAPE AND POOL DRAWINGS.

1 | GROUND FLOOR PLAN
 1/8" = 1'-0"

