



800 DOUGLAS ENTRANCE, SUITE 200  
CORAL GABLES, FL 33134  
T: 305-444-4691 F: 305-447-3580  
www.spilliscandeladmjm.com

FLORIDA LICENSE AA0003298

CONSULTANTS

LANDSCAPE ARCHITECTURE

SAVINO & MILLER DESIGN STUDIO  
12345 NE 6TH AVENUE, MIAMI, FLORIDA 33161  
Tel: (305) 892-9822 Fax: (305) 895-9083

ESTIMATING CONSULTANT  
CMS CONSTRUCTION MANAGEMENT SERVICES  
10 FARMY DRUM SUITE 301 DEERFIELD BEACH, FL 33441  
Tel: (954) 481-1611 Fax: (954) 427-3142

COASTAL CONSTRUCTION  
EDC CORPORATION  
2455 SW 27TH AVENUE, MIAMI, FLORIDA 33145  
Tel: (305) 858-8100 Fax: (305) 858-4780

FOOD SERVICES CONSULTANT  
SYSTEMS DESIGN INTERNATIONAL  
110 WEST BROWARD BLVD. FL UNDERPASS, FL 33091  
Tel: (954) 315-3855 Fax: (954) 208-9018

POOL CONSULTANT  
AQUADYNAMICS, INC.  
5000 SW 75TH AVE. SUITE 203, MIAMI, FLORIDA 33155  
Tel: (305) 667-8975 Fax: (305) 662-1002

LEED CONSULTANT  
SPINNAKER GROUP, INC.  
501 SPINNAKER, WESTON, FL 33326  
Tel: (954) 347-0967 Fax: (954) 217-3614

REGISTRATION

PROFESSIONAL OF RECORD: JESUS CRUZ  
DISCIPLINE: ARCHITECTURE  
REGISTRATION NO. AR0006906

ISSUE

MARK DATE DESCRIPTION

PROJECT NO: 60028604

DRAWN BY:

CHECKED BY:

DATE: 10-22-2009

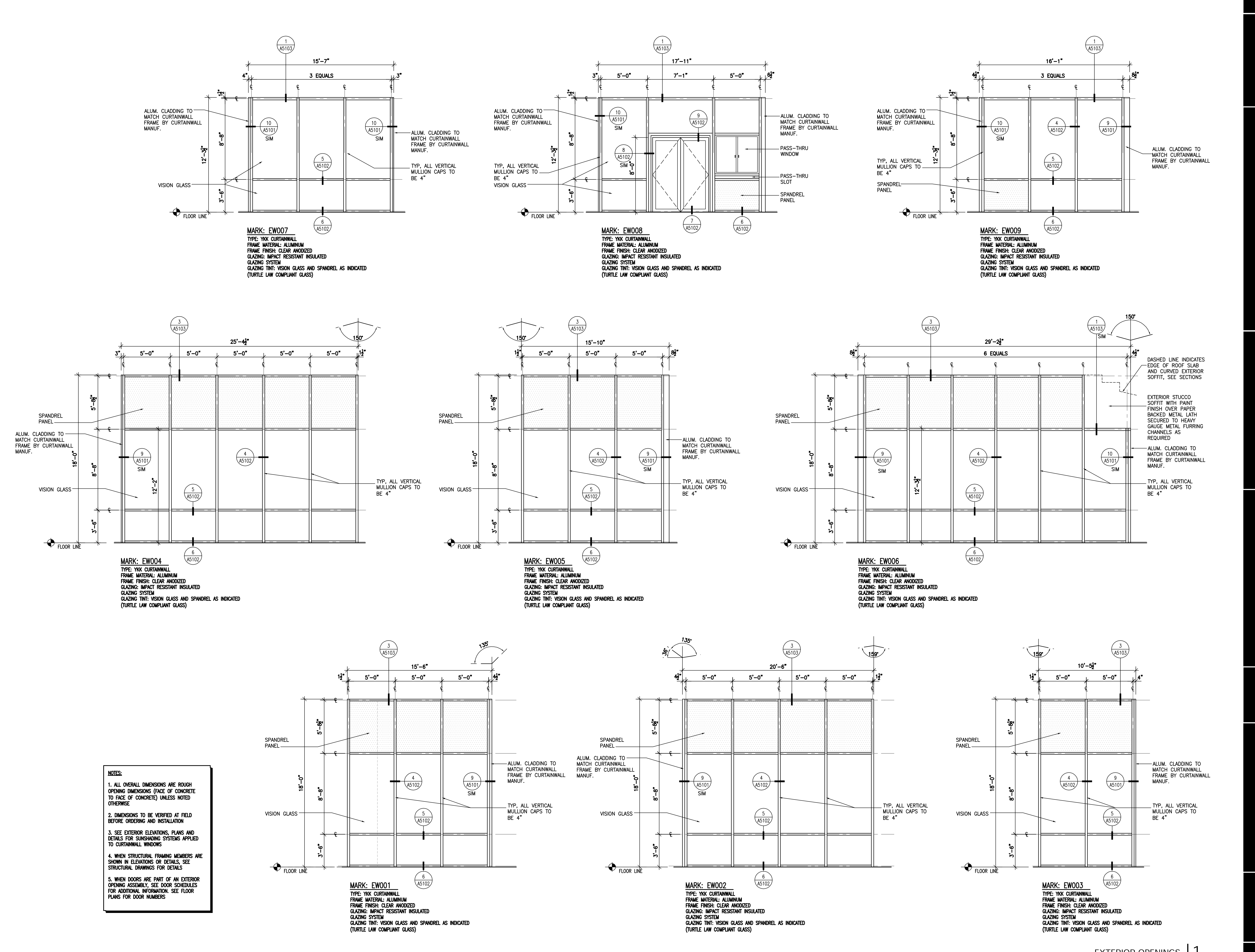
KEY PLAN

SHEET TITLE

EXTERIOR OPENINGS

A6.5.01

E  
D  
C  
B  
A



**MARK: EW007**  
TYPE: YKK CURTAINWALL  
FRAME MATERIAL: ALUMINUM  
FRAME FINISH: CLEAR ANODIZED  
GLAZING: IMPACT RESISTANT INSULATED  
GLAZING SYSTEM  
GLAZING TINT: VISION GLASS AND SPANDREL AS INDICATED  
(TURTLE LAW COMPLIANT GLASS)

**MARK: EW008**  
TYPE: YKK CURTAINWALL  
FRAME MATERIAL: ALUMINUM  
FRAME FINISH: CLEAR ANODIZED  
GLAZING: IMPACT RESISTANT INSULATED  
GLAZING SYSTEM  
GLAZING TINT: VISION GLASS AND SPANDREL AS INDICATED  
(TURTLE LAW COMPLIANT GLASS)

**MARK: EW009**  
TYPE: YKK CURTAINWALL  
FRAME MATERIAL: ALUMINUM  
FRAME FINISH: CLEAR ANODIZED  
GLAZING: IMPACT RESISTANT INSULATED  
GLAZING SYSTEM  
GLAZING TINT: VISION GLASS AND SPANDREL AS INDICATED  
(TURTLE LAW COMPLIANT GLASS)

**MARK: EW004**  
TYPE: YKK CURTAINWALL  
FRAME MATERIAL: ALUMINUM  
FRAME FINISH: CLEAR ANODIZED  
GLAZING: IMPACT RESISTANT INSULATED  
GLAZING SYSTEM  
GLAZING TINT: VISION GLASS AND SPANDREL AS INDICATED  
(TURTLE LAW COMPLIANT GLASS)

**MARK: EW005**  
TYPE: YKK CURTAINWALL  
FRAME MATERIAL: ALUMINUM  
FRAME FINISH: CLEAR ANODIZED  
GLAZING: IMPACT RESISTANT INSULATED  
GLAZING SYSTEM  
GLAZING TINT: VISION GLASS AND SPANDREL AS INDICATED  
(TURTLE LAW COMPLIANT GLASS)

**MARK: EW006**  
TYPE: YKK CURTAINWALL  
FRAME MATERIAL: ALUMINUM  
FRAME FINISH: CLEAR ANODIZED  
GLAZING: IMPACT RESISTANT INSULATED  
GLAZING SYSTEM  
GLAZING TINT: VISION GLASS AND SPANDREL AS INDICATED  
(TURTLE LAW COMPLIANT GLASS)

**MARK: EW001**  
TYPE: YKK CURTAINWALL  
FRAME MATERIAL: ALUMINUM  
FRAME FINISH: CLEAR ANODIZED  
GLAZING: IMPACT RESISTANT INSULATED  
GLAZING SYSTEM  
GLAZING TINT: VISION GLASS AND SPANDREL AS INDICATED  
(TURTLE LAW COMPLIANT GLASS)

**MARK: EW002**  
TYPE: YKK CURTAINWALL  
FRAME MATERIAL: ALUMINUM  
FRAME FINISH: CLEAR ANODIZED  
GLAZING: IMPACT RESISTANT INSULATED  
GLAZING SYSTEM  
GLAZING TINT: VISION GLASS AND SPANDREL AS INDICATED  
(TURTLE LAW COMPLIANT GLASS)

**MARK: EW003**  
TYPE: YKK CURTAINWALL  
FRAME MATERIAL: ALUMINUM  
FRAME FINISH: CLEAR ANODIZED  
GLAZING: IMPACT RESISTANT INSULATED  
GLAZING SYSTEM  
GLAZING TINT: VISION GLASS AND SPANDREL AS INDICATED  
(TURTLE LAW COMPLIANT GLASS)

**NOTES:**  
1. ALL OVERALL DIMENSIONS ARE ROUGH OPENING DIMENSIONS (FACE OF CONCRETE TO FACE OF CONCRETE) UNLESS NOTED OTHERWISE  
2. DIMENSIONS TO BE VERIFIED AT FIELD BEFORE ORDERING AND INSTALLATION  
3. SEE EXTERIOR ELEVATIONS, PLANS AND DETAILS FOR SHADING SYSTEMS APPLIED TO CURTAINWALL WINDOWS  
4. WHEN STRUCTURAL FRAMING MEMBERS ARE SHOWN IN ELEVATIONS OR DETAILS, SEE STRUCTURAL DRAWINGS FOR DETAILS  
5. WHEN DOORS ARE PART OF AN EXTERIOR OPENING ASSEMBLY, SEE DOOR SCHEDULES FOR ADDITIONAL INFORMATION. SEE FLOOR PLANS FOR DOOR NUMBERS