

- LANDSCAPE ARCHITECTURE
SAVINO & MILLER DESIGN STUDIO
 12345 NE 6TH AVENUE, MIAMI, FLORIDA 33161
 Tel: (305) 892-9082 Fax: (305) 895-9083
- ESTIMATING CONSULTANT
CM5 CONSTRUCTION MANAGEMENT SERVICES
 10 PARKWAY DRIVE, SUITE 301, DEERFIELD BEACH, FL 33441
 Tel: (954) 481-1611 Fax: (954) 427-3142
- COASTAL CONSTRUCTION
EDC CORPORATION
 2455 SW 27TH AVENUE, MIAMI, FLORIDA 33145
 Tel: (305) 858-8100 Fax: (305) 858-4760
- FOOD SERVICES CONSULTANT
SYSTEMS DESIGN INTERNATIONAL
 710 GALT BRIDGE BLDG #100, FT LAUDERDALE, FL 33301
 Tel: (954) 315-3655 Fax: (954) 208-9018
- POOL CONSULTANT
AQUADYNAMICS, INC.
 5000 SW 75TH AVE, SUITE 203, MIAMI, FLORIDA 33155
 Tel: (305) 667-8975 Fax: (305) 662-1002
- LEED CONSULTANT
SPINNAKER GROUP, INC.
 501 SPINNAKER, WESTON, FL 33326
 Tel: (954) 347-0967 Fax: (954) 217-3614

PROFESSIONAL OF RECORD: E. RIVERO, P.E.
 DISCIPLINE: ELECTRICAL ENGINEERING
 REGISTRATION NO.: 42709

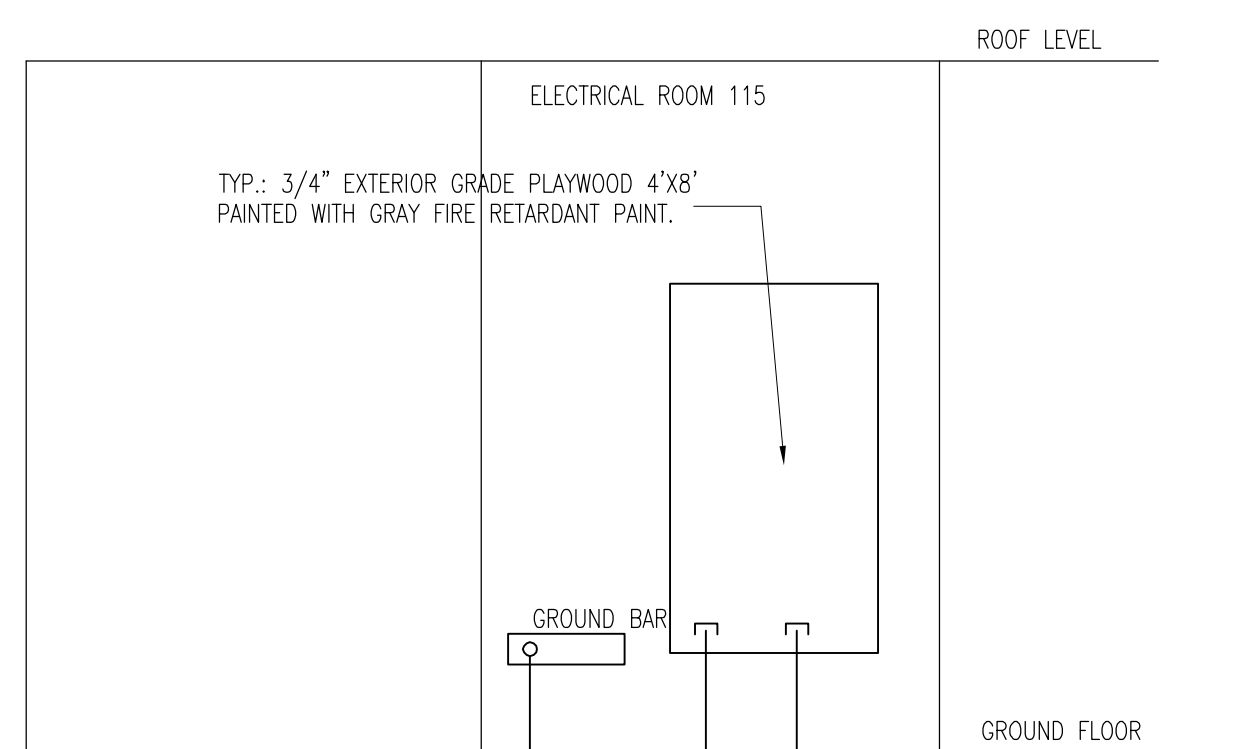
| MARK | DATE | DESCRIPTION |
|------|----------|-------------------------|
| △ | 06-22-10 | ITC#1 SUBMITTAL CHANGES |
| | | |
| | | |
| | | |
| | | |
| | | |
| | | |
| | | |
| | | |
| | | |
| | | |
| | | |
| | | |
| | | |
| | | |
| | | |
| | | |
| | | |
| | | |

60028604

RISER
DIAGRAMS

E4.1.01

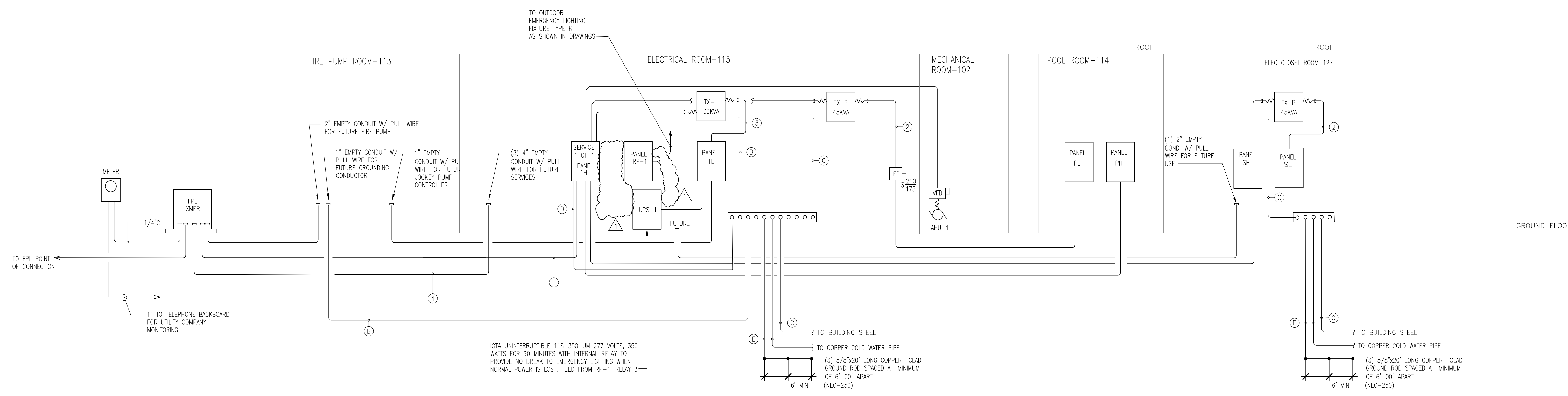
E
 D
 C
 B
 A



PHONE/DATA & SECURITY RISER
 N.T.S.

WIRING LEGEND

- Ⓐ (1) # 8 AWG THWN
- Ⓑ (1) # 6 AWG THWN
- Ⓒ (1) # 4 AWG THWN
- Ⓓ (1) # 2/0 AWG THWN
- Ⓔ (1) # 3/0 AWG THWN
- ① TWO SETS OF (4) # 250 KCM THWN (CU) IN 4" C
- ② (4) # 2/0 AWG THWN (CU) + (1) # 6 AWG THWN (CU/G) IN 2" C
- ③ (4) # 1 AWG THWN (CU) + (1) # 6 AWG THWN (CU/G) IN 2" C
- ④ (3) 4" EMPTY COND. W/ PULL WIRE FOR FUTURE SERVICES



POWER RISER DIAGRAM
 N.T.S.