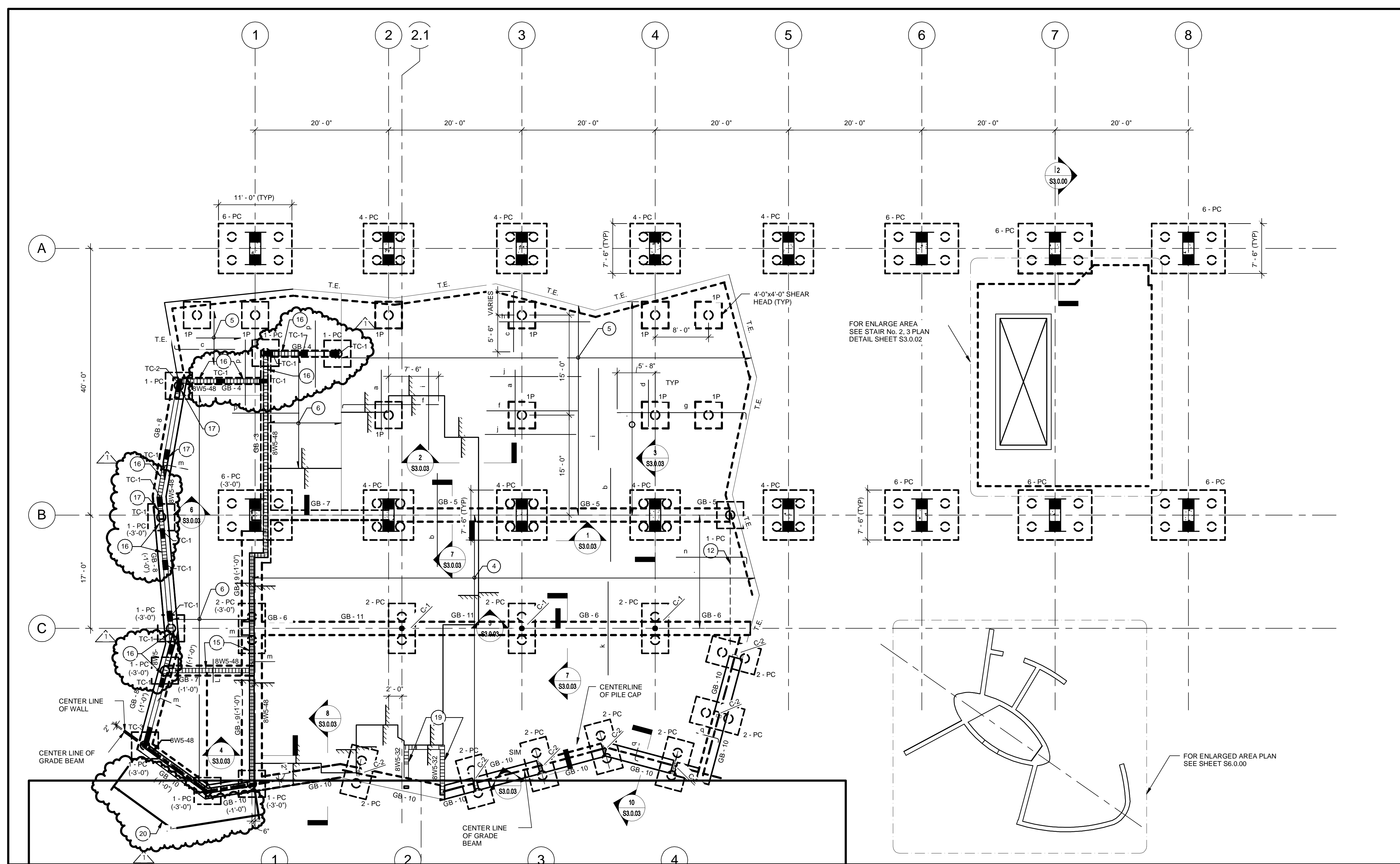


10-22-09	PERMIT SET
12-21-09	BUILDING DEPARTMENT COMMENTS

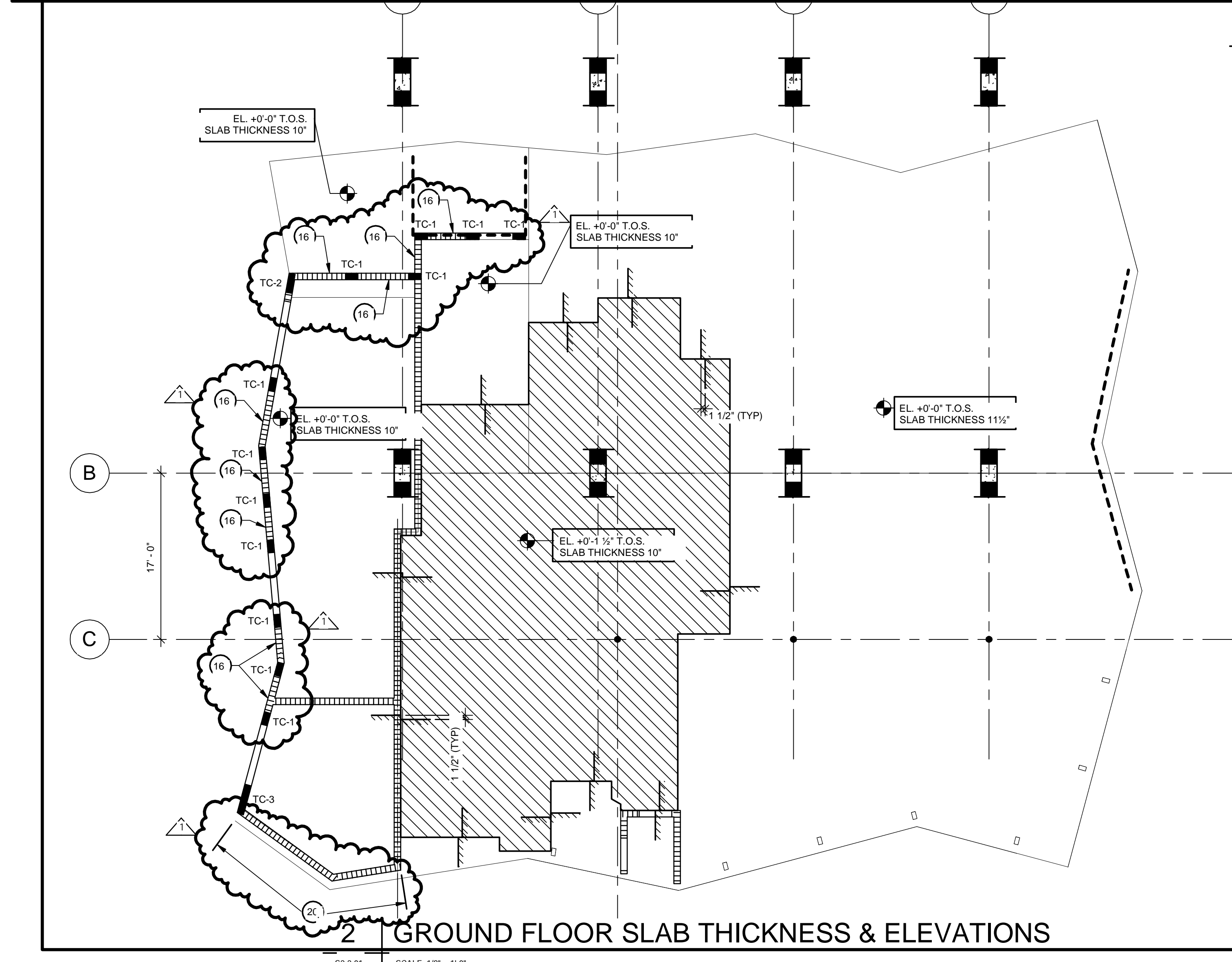
PROJECT NO:	60028604
DRAWN BY:	CHAMIZO T
CHECKED BY:	
DATE:	12-21-2009



- NOTES:
- TOP OF PILE CAP ELEVATION (+2'-0") UNLESS OTHERWISE NOTED THUS ().
 - (IP) INDICATES SINGLE PILE. SEE DETAIL A/S3.0.03.
 - TOP OF STRUCTURAL SLAB VARIES. SEE ELEVATION PLAN.
 - ONE WAY CONCRETE SLAB W/ #6 @ 10" O.C. BOTTOM IN EAST-WEST DIRECTION (PLACE BARS IN OUTER LAYER) AND #4 @ 12" O.C. TEMPERATURE. SEE PLAN FOR TOP REINFORCING AND SLAB THICKNESS.
 - TWO WAY CONCRETE SLAB W/ #5 @ 12" O.C. BOTTOM EACH WAY. PLACE BARS IN EAST-WEST DIRECTION IN OUTER LAYER. REFER TO PLAN FOR TOP REINFORCING AND FOR SLAB THICKNESS.
 - ONE WAY CONCRETE SLAB W/ #6 @ 10" O.C. BOTTOM IN NORTH-SOUTH DIRECTION (PLACE BARS IN OUTER LAYER) AND #4 @ 12" O.C. TEMPERATURE. SEE PLAN FOR TOP REINFORCING AND SLAB THICKNESS.
 - TOP OF GRADE BEAM ELEVATION EQUAL TO SLAB ELEVATION (SEE PLAN) UNLESS OTHERWISE NOTED THUS ().
 - FOR DIMENSIONS NOT SHOWN, REFER TO ARCHITECTURAL DRAWINGS.
 - FOR SERVICE ELEVATOR PILE CAP SEE ENLARGE PLAN AT SHEET S3.0.02.
 - FOR ELEVATOR AND STAIR PILE CAP SEE ENLARGE PLAN AT SHEET S3.0.02.
 - 8" CMU WALL AROUND ELEVATOR AND STAIRS SHALL BE 8WS-32 IN FILLED CELLS.
 - PROVIDE 4 #5 BOTTOM BARS IN 1'-6" BAND (EQUAL SPACED) AS INDICATED ON PLAN.
 - ALL 8" MASONRY WALLS AND TIE COLUMNS IN THIS AREA ARE BEARING.
 - METAL STAIR BY STAIR MANUFACTURER.
 - PROVIDE 8"x12" TIE BEAM W/ 2 #5 TOP & BOTTOM AND #3 TIES @ 12" O.C. AT ELEVATION +10'-0".
 - PROVIDE LADDER TYPE 9(GA) MASONRY REINFORCING EVERY COURSE (8" O.C.) AT EXTERIOR 8" BLOCK WALL FROM GROUND TO SECOND FLOOR ONLY.
 - FOR TOP TIE COLUMN CONNECTION SEE DETAIL P13.1.00.
 - FOR NON-BEARING WALL TOP CONNECTION REFER TO DETAILS E, H, AND O ON SHEET S3.1.00.
 - PROVIDE 1 #5 IN GROUTED CELL ADJACENT TO WALL OPENINGS.
 - STOREFRONT IN FRONT OF THE MASONRY WALL. DO NOT CONNECT STOREFRONT WITH THE CMU WALL.
 - REFER TO NOTE 12 ON S0.1.00 FOR BUILDING DATUM NGVD ELEVATION.

1 FOUNDATION AND FIRST FLOOR PLAN

S2.2.01 SCALE: 1/8" = 1'-0"



2 GROUND FLOOR SLAB THICKNESS & ELEVATIONS

S2.2.01 SCALE: 1/8" = 1'-0"

- LEGEND (TOP BARS)
- a: 8 #6 x 10'-0" IN 7'-6" BAND.
 - b: #5 @ 12" O/C x 14'-0". (PLACE BARS ALL ALONG GRIDLINE B)
 - c: #5 @ 12" O/C (SEE PLAN FOR LENGTH).
 - d: 7 #6 x 10'-0" IN 7'-0" BAND.
 - e: 6 #6. (SEE PLAN FOR LENGTH)
 - f: 10 #6 x 14'-0" IN 7'-6" BAND.
 - g: #6 @ 6" O/C. (SEE PLAN FOR LENGTH)
 - h: 8 #6 x 14'-0" IN 4'-6" BAND.
 - i: 9 #5 x 10'-0" IN 12'-6" BAND.
 - j: 8 #5 x 14'-0" IN 7'-6" BAND.
 - k: #6 @ 10" O/C x 14'-0".
 - l: #5 @ 12" O/C x 4'-0", 3'-6"
 - m: #5 @ 12" O/C.
 - n: #5 @ 12" O/C (PLACE BARS ALONG T.E. BETWEEN GB-6 AND GB-5). 2'-6"
 - o: #5 @ 12" O/C.
 - p: #5 @ 12" O/C x 10'-0", 5'-0"
 - q: #5 @ 12" O/C.

- LEGEND:
- BOTTOM REINFORCING
 - TOP REINFORCING
 - ▨ SLAB RECESS



REFERENCE DRAWINGS:

COLUMN SCHEDULE	S4.0.00
FOUNDATION DETAILS	S3.0.00/S3.0.01/S3.0.02/S6.0.01
MASONRY DETAILS	S3.1.00