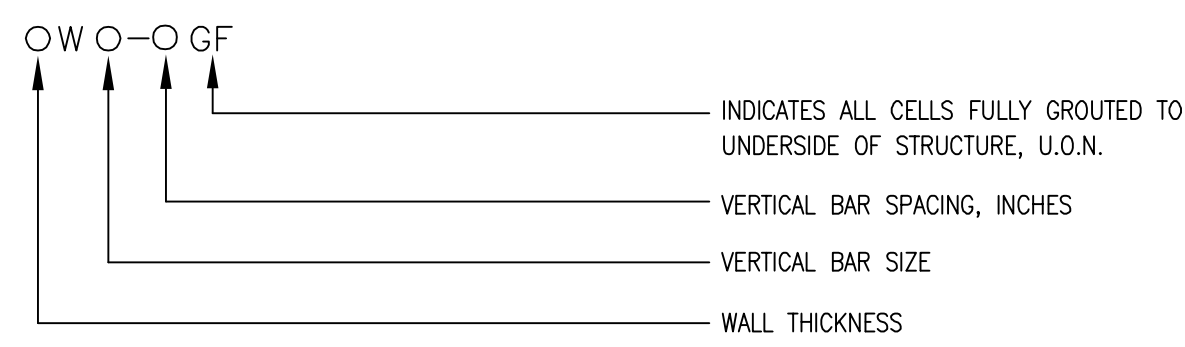


# MASONRY WALL LEGEND (SEE PLANS)



## EXAMPLES

- 6W5-40 ..... 6" CMU WITH #5 @ 40" C/C (DETAIL A)
- 8W4-16GF ..... 8" CMU WITH #4 @ 16" C/C, ALL CELLS FULLY GROUTED (DETAIL A)
- 12W2/6-32 ..... 12" CMU WITH 2 #6 IN ONE CELL @ 32" C/C (DETAIL B)

**WALL REINFORCEMENT DETAIL (1 BAR)**  
 NO SCALE



**WALL REINFORCEMENT DETAIL (2 BARS)**  
 NO SCALE

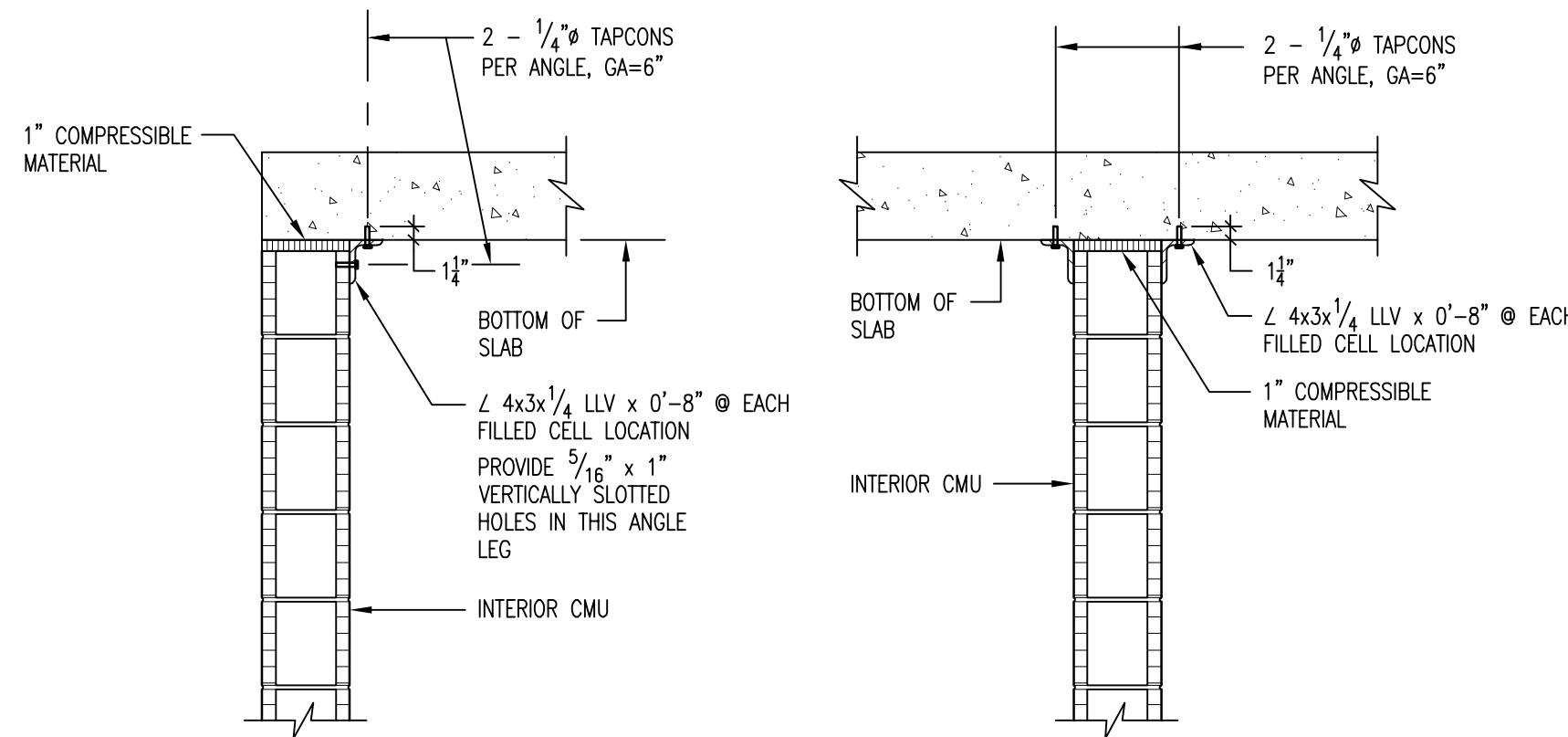


**DETAIL**  
 NTS



### NOTES

- t=THICKNESS (SEE ARCH. DWGS.)
- JOINT REINF. NOT SHOWN (9 GAUGE LADDER TYPE @ 16", TYP.)
- VERT. REINF. MUST BE HELD FIRMLY AND CORRECTLY IN PLACE WITH GALV. BAR POSITIONERS. (2 MINIMUM PER LIFT)
- FOR THE ATTACHMENT OF CMU WALLS TO SLAB ABOVE SEE DETAIL D OR E THIS SHEET.
- MASONRY WALLS NOT SPECIFICALLY INDICATED TO HAVE REINFORCING SHALL BE REINFORCED WITH #5 @ 48" o/c IN GROUTED CELLS.
- SPLICES OF REINFORCING IN MASONRY SHALL BE 48".

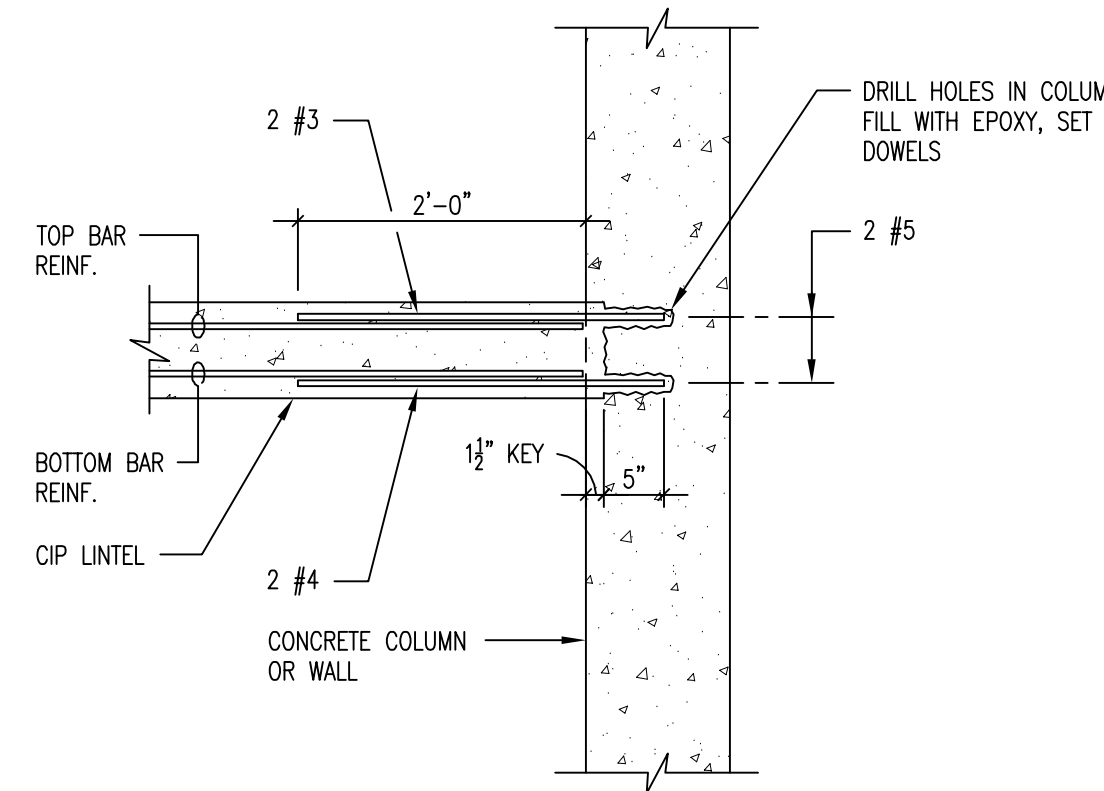


**DETAIL**  
 SCALE: 3/4" = 1'-0"

**DETAIL**  
 SCALE: 3/4" = 1'-0"

## LINTEL ADJACENT TO CONC. COLUMN OR WALL

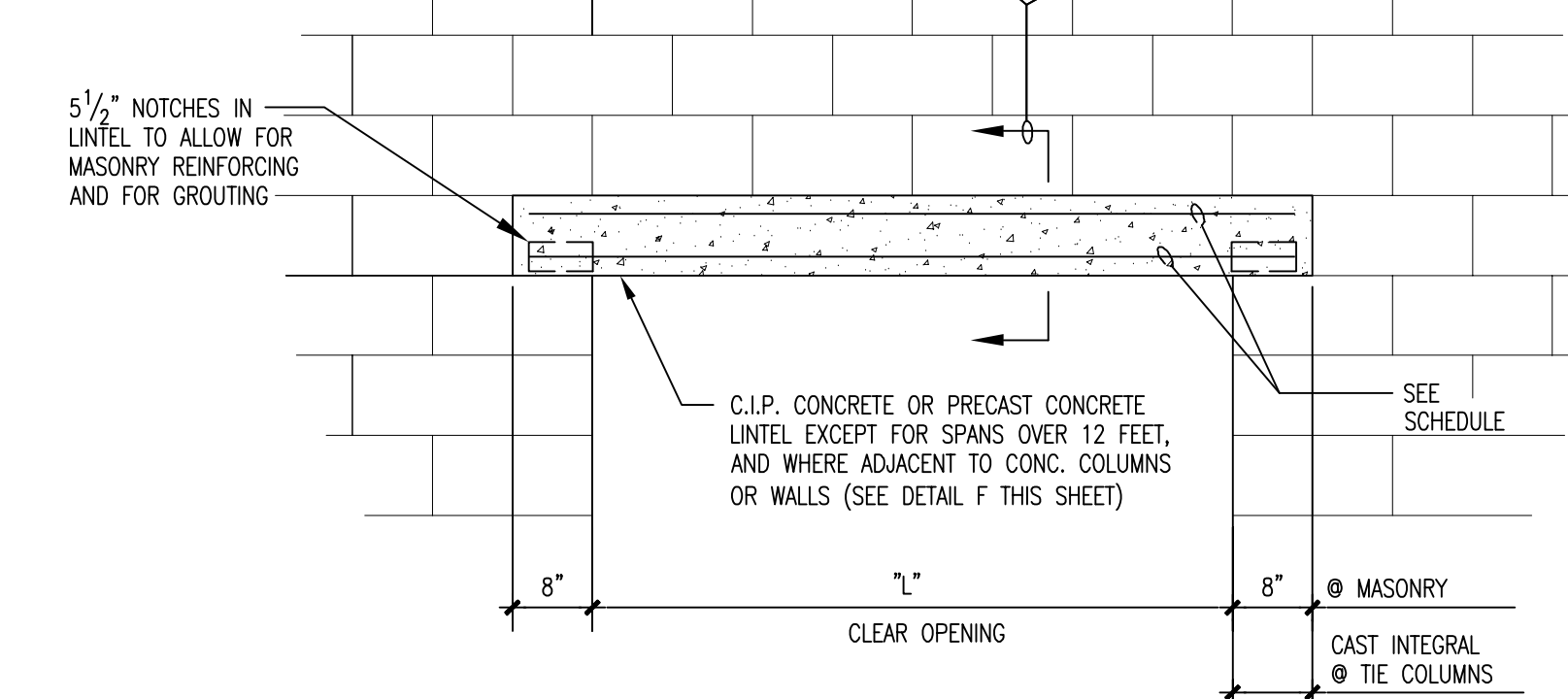
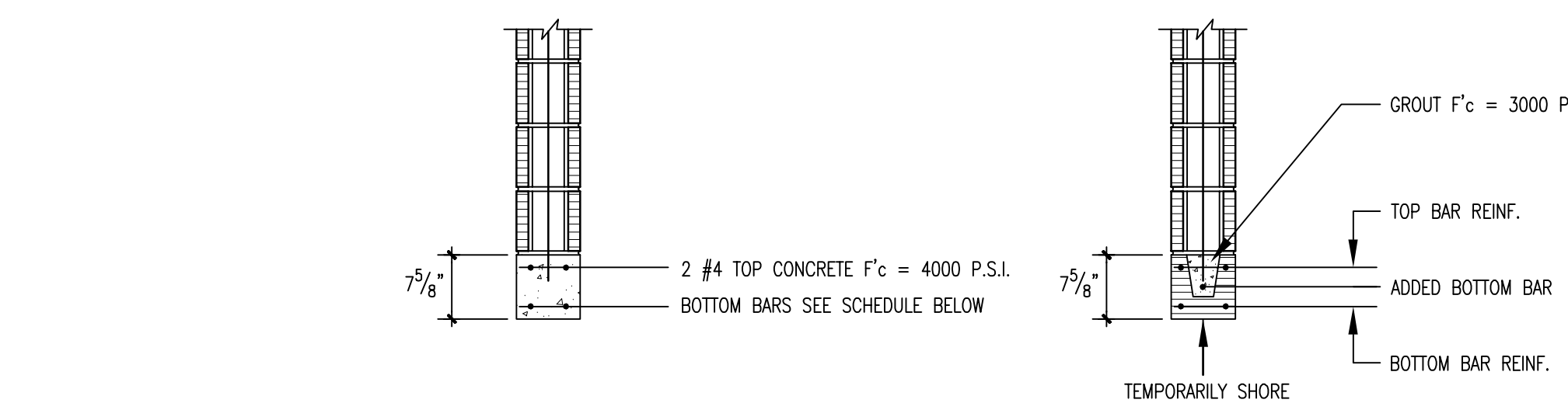
SCALE: 3/4" = 1'-0"



ATTACH ALL NON-BEARING CMU WALLS TO BOTTOM OF STRUCTURE AS SHOWN IN DETAILS D, E, N AND O THIS SHEET

## CAST-IN-PLACE

## PRECAST



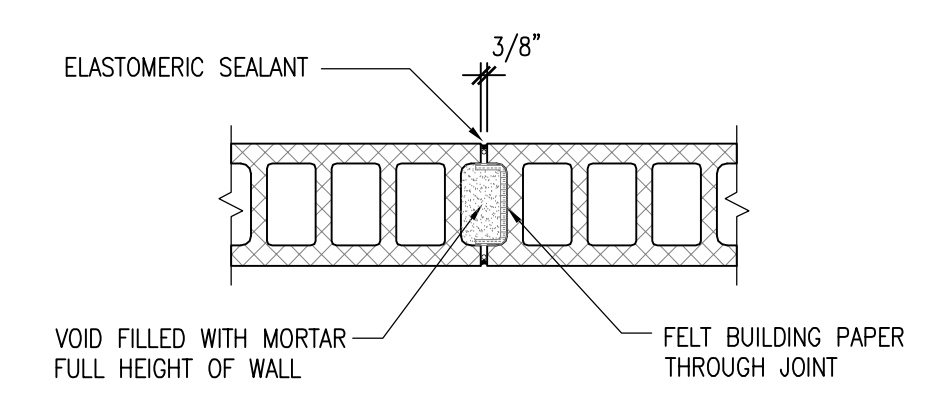
LINTEL DETAILS FOR C.M.U. WALLS			
CONCRETE LINTEL SCHEDULE			
CLEAR SPAN "L"	BOT. BAR REINF.	TOP BAR REINF.	ADDED BOTTOM BAR
UP TO 8'-0"	2 #4	2 - 7/32" WIRE	-
UP TO 12'-0"	2 #5	2 #3	-

CASES OVER 12" SHALL UTILIZE A CAST IN PLACE CONCRETE TIE BEAM (8"x16" MIN.) WITH 2 #5 TOP & BOTTOM AND #3 @ 5" o/c

**DETAIL**  
 SCALE: 1/2" = 1'-0"

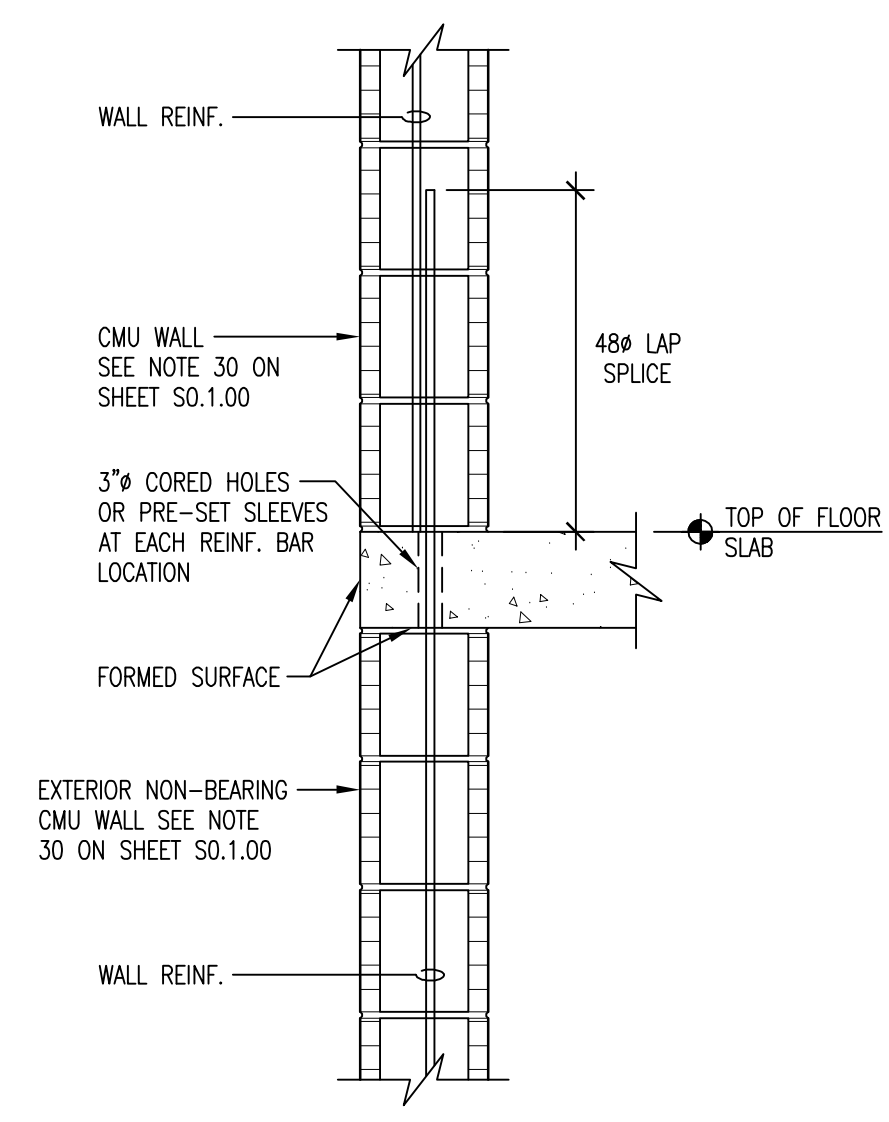


**DETAIL**  
 SCALE: 1 1/2" = 1'-0"

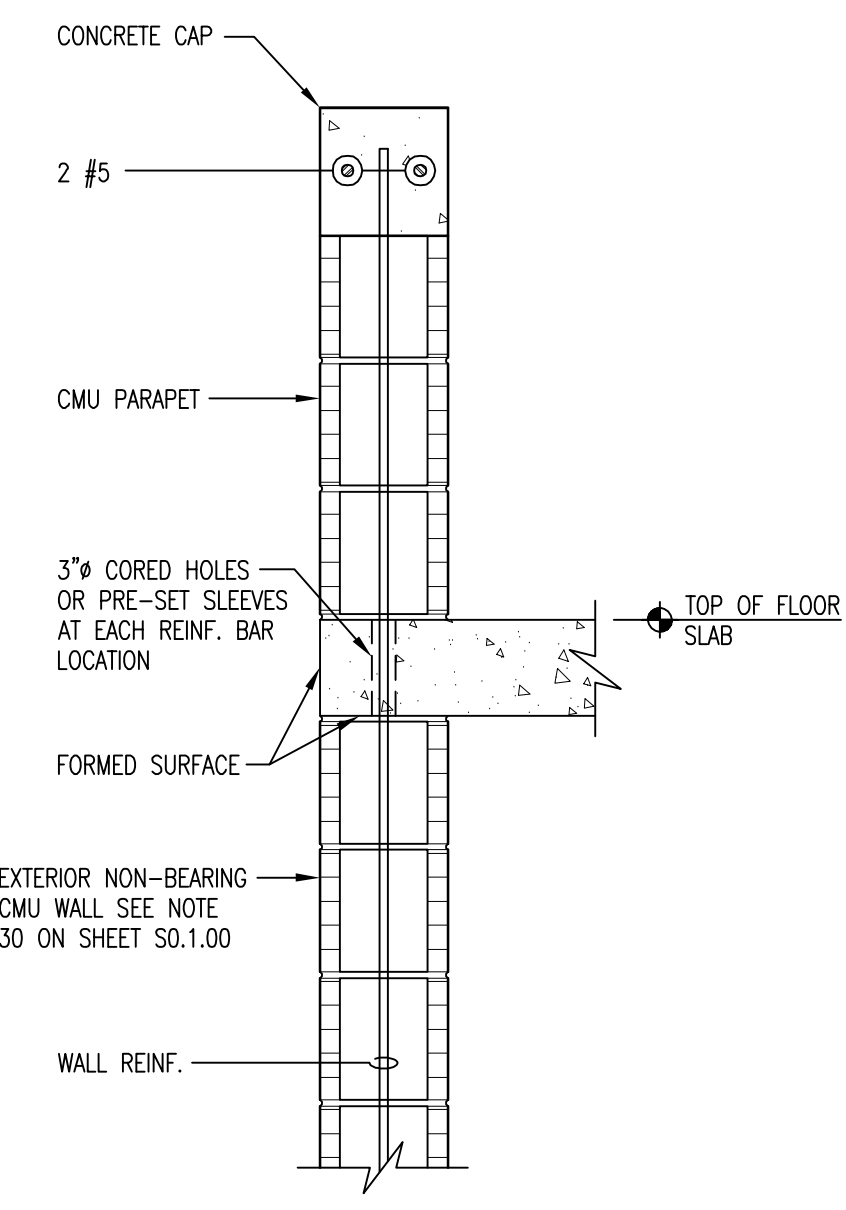


## CONTROL JOINT AT INTERIOR WALL

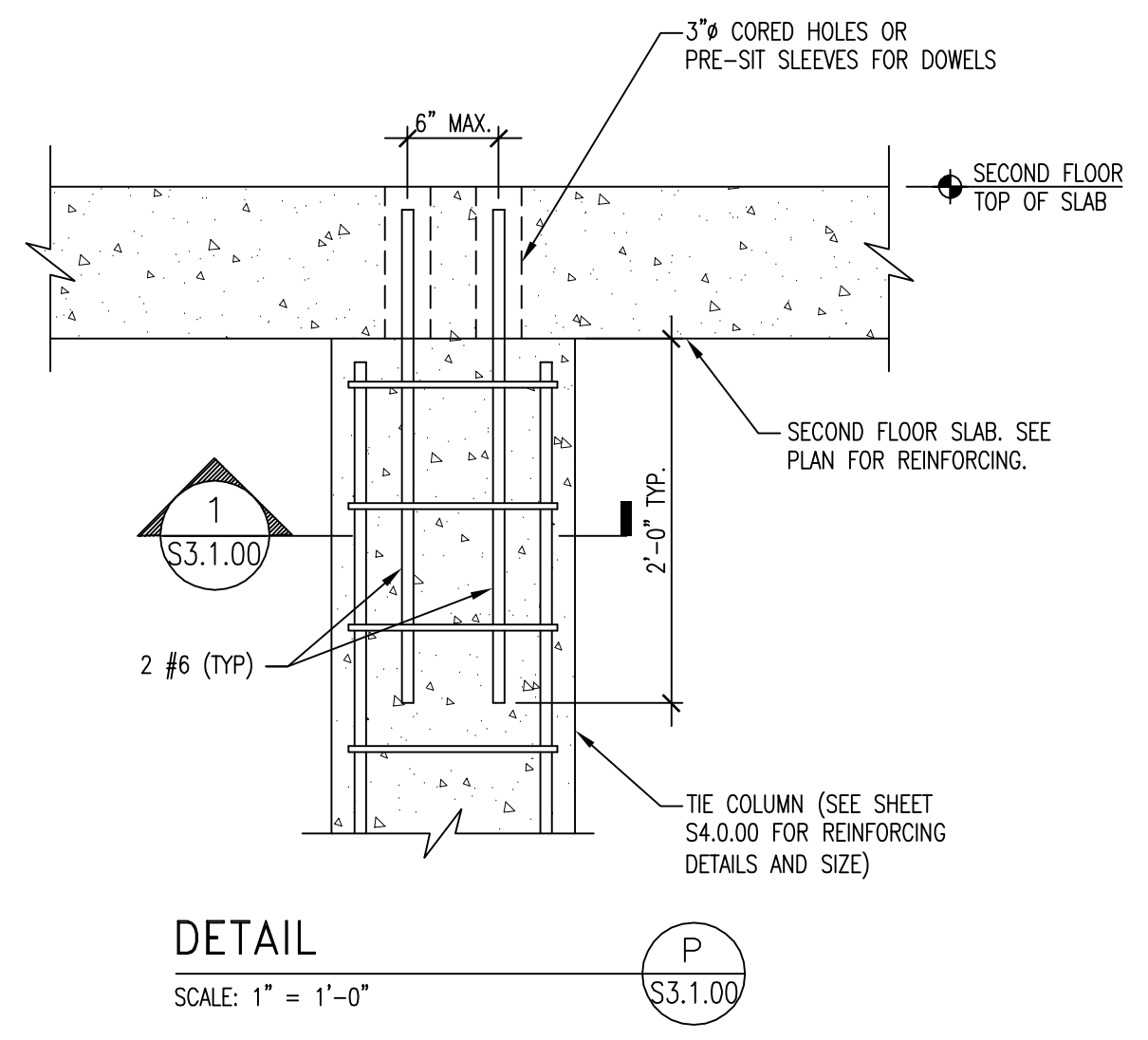
SCALE: NOT TO SCALE



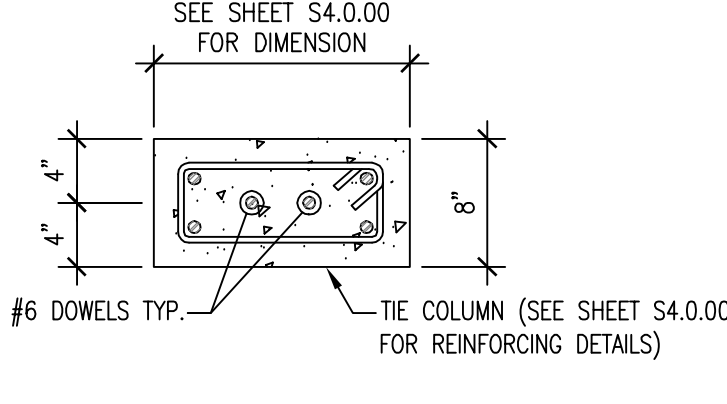
**DETAIL**  
 SCALE: 1" = 1'-0"



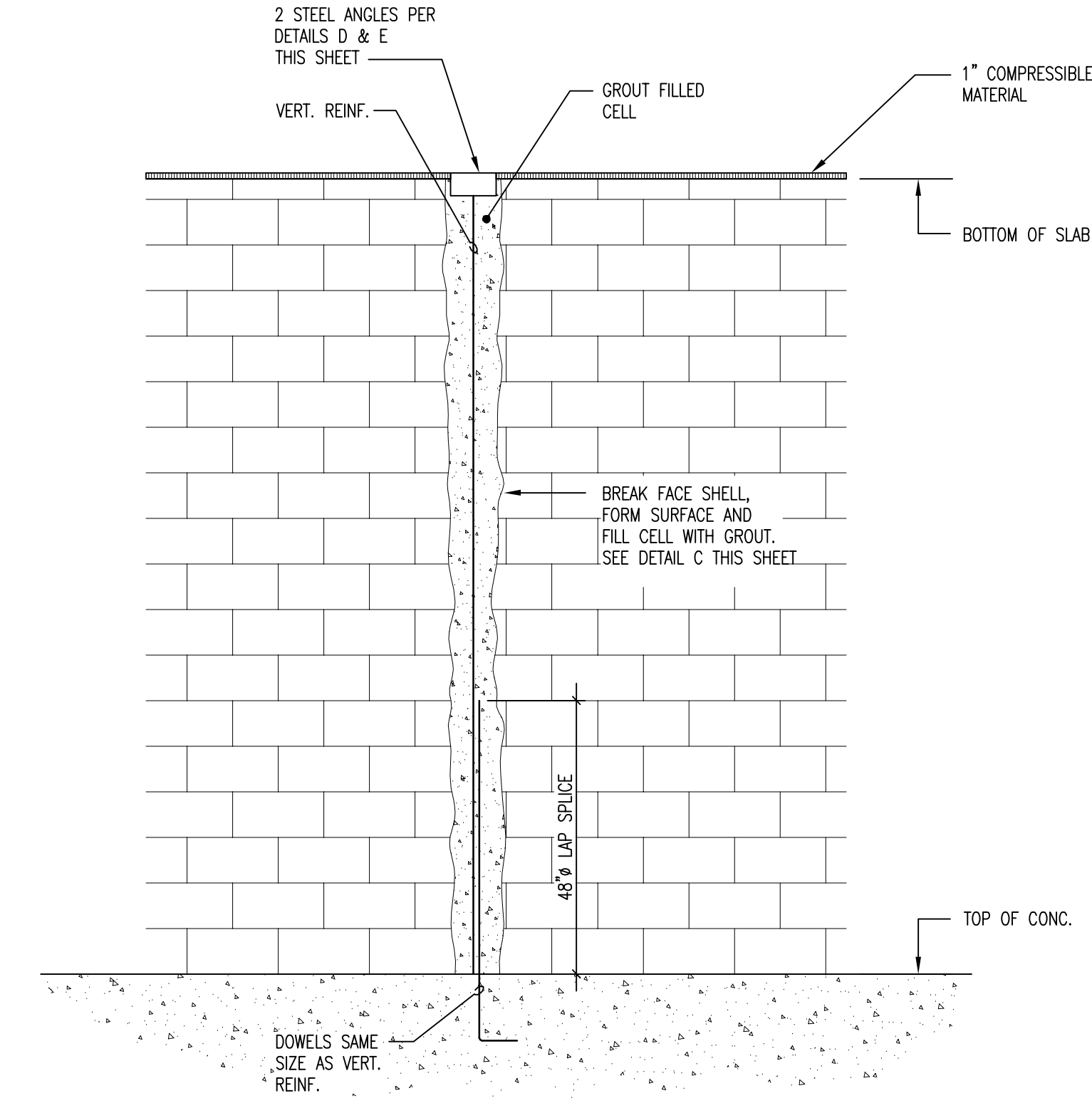
**DETAIL**  
 SCALE: 1" = 1'-0"



**DETAIL**  
 SCALE: 1" = 1'-0"



**SECTION**  
 SCALE: 1" = 1'-0"



**DETAIL**  
 SCALE: 1/2" = 1'-0"

**DETAIL**  
 SCALE: 1/2" = 1'-0"

CLIENT  
**TOWN OF SURFSIDE COMMUNITY CENTER**  
 9301 Collins Avenue, Surfside, Florida 33154

DESIGNER  
**SPILLIS CANDELA DMJM**  
 800 DOUGLAS ENTRANCE, SUITE 200  
 CORAL GABLES, FL 33134  
 T: 305-444-4691 F: 305-447-3580  
 www.spilliscandeladmjm.com

FLORIDA LICENSE AA0003298

CONSULTANTS

**LANDSCAPE ARCHITECTURE**  
 SAVINO & MILLER DESIGN STUDIO  
 12345 NE 6TH AVENUE, MIAMI, FLORIDA 33161  
 Tel: (305) 892-9082 Fax: (305) 895-9083

**ESTIMATING CONSULTANT**  
 CMS CONSTRUCTION MANAGEMENT SERVICES  
 10 PAMPY DOME SUITE 301 DEERFIELD BEACH, FL 33441  
 Tel: (954) 481-1611 Fax: (954) 427-3142

**COASTAL CONSTRUCTION**  
 EDC CORPORATION  
 2455 SW 27TH AVENUE, MIAMI, FLORIDA 33145  
 Tel: (305) 858-8100 Fax: (305) 858-4760

**FOOD SERVICES CONSULTANT**  
 SYSTEMS DESIGN INTERNATIONAL  
 110 WEST BROWARD BOULEVARD, FT. LAUDERDALE, FL 33301  
 Tel: (954) 315-3855 Fax: (954) 208-9018

**POOL CONSULTANT**  
 AQUADYNAMICS, INC.  
 5000 SW 75TH AVE. SUITE 203, MIAMI, FLORIDA 33155  
 Tel: (305) 667-8975 Fax: (305) 662-1002

**LEED CONSULTANT**  
 SPINNAKER GROUP, INC.  
 501 SPINNAKER, WESTON, FL 33326  
 Tel: (954) 347-0967 Fax: (954) 217-3614

REGISTRATION  
 PROFESSIONAL OF RECORD: W. RONALD HUNT  
 DISCIPLINE: STRUCTURAL ENGINEERING  
 REGISTRATION NO.: 19689

ISSUE

NO.	DATE	DESCRIPTION
1	12-21-09	BUILDING DEPARTMENT COMMENTS

MARK DATE DESCRIPTION

PROJECT NO: 60028604

DRAWN BY: ALEJANDRO P

CHECKED BY:

DATE: 10-22-2009

KEY PLAN

# MASONRY WALL LEGEND AND DETAILS

S3.1.00