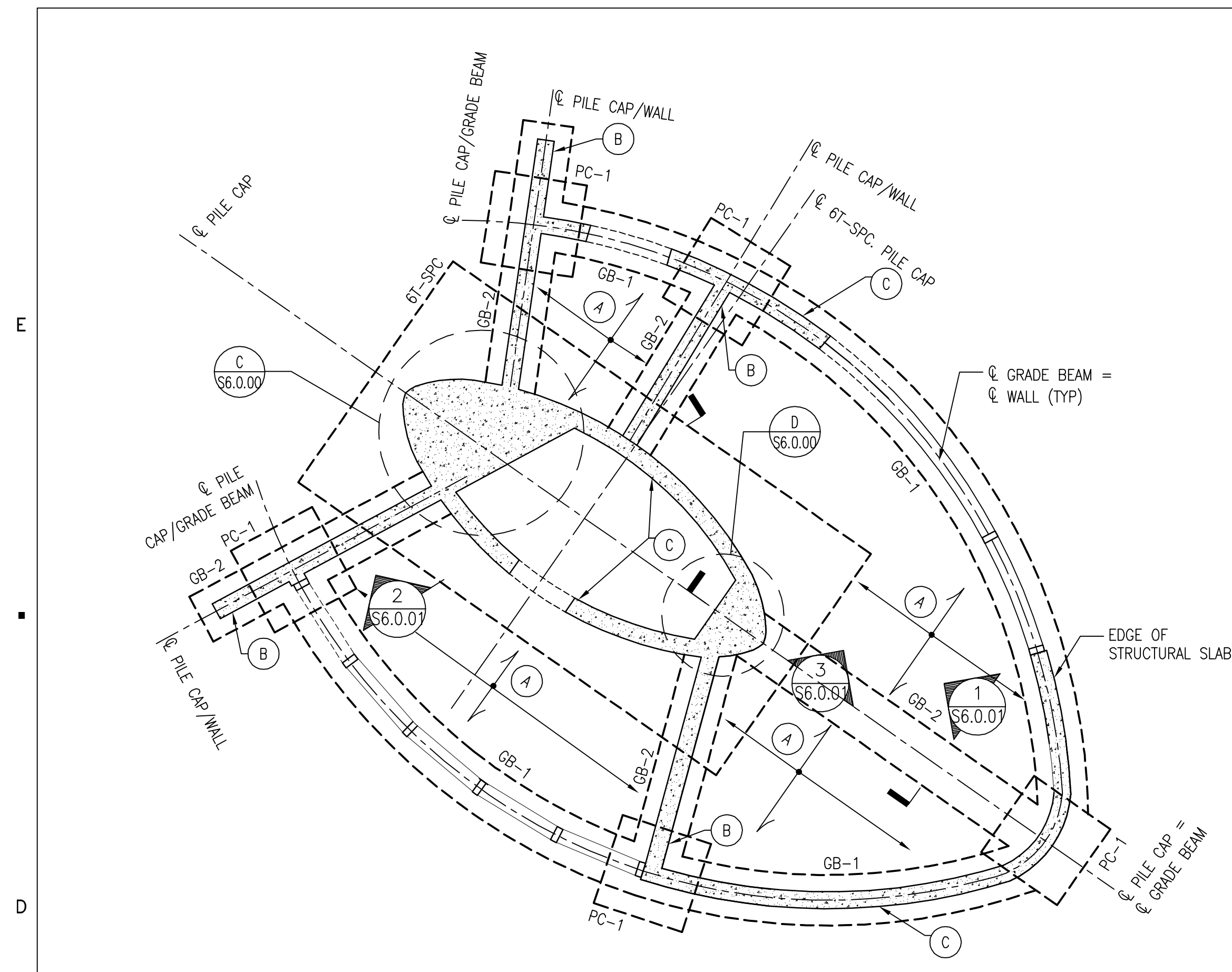


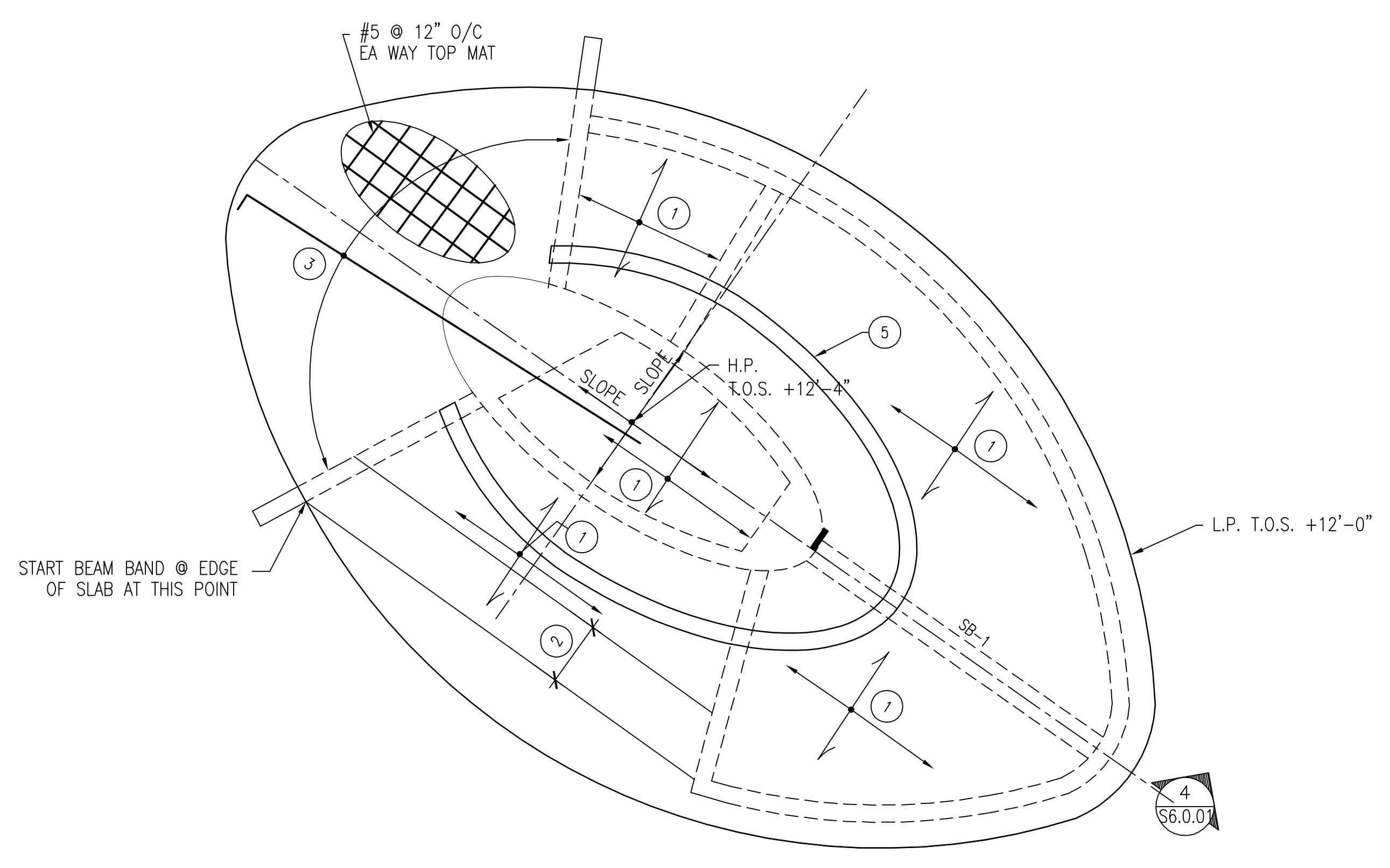
- LANDSCAPE ARCHITECTURE**  
**SAVINO & MILLER DESIGN STUDIO**  
 12345 NE 6TH AVENUE, MIAMI, FLORIDA 33161  
 Tel: (305) 862-9082 Fax: (305) 865-9083
- ESTIMATING CONSULTANT**  
**CMS CONSTRUCTION MANAGEMENT SERVICES**  
 10 FARROW DRIVE, SUITE 301 BEEFIELD BEACH, FL 33441  
 Tel: (854) 461-1611 Fax: (854) 427-3142
- COASTAL CONSTRUCTION**  
**EDC CORPORATION**  
 2455 SW 27TH AVENUE, MIAMI, FLORIDA 33145  
 Tel: (305) 858-8100 Fax: (305) 858-4760
- FOOD SERVICES CONSULTANT**  
**SYSTEMS DESIGN INTERNATIONAL**  
 110 EAST BROWARD BOULEVARD, FT. LAUDERDALE, FL 33301  
 Tel: (954) 315-3655 Fax: (954) 208-9018
- POOL CONSULTANT**  
**AQUADYNAMICS, INC.**  
 5000 SW 75TH AVE. SUITE 203, MIAMI, FLORIDA 33155  
 Tel: (305) 867-8975 Fax: (305) 662-1002
- LEED CONSULTANT**  
**SPINNAKER GROUP, INC.**  
 501 SPINNAKER, WESTON, FL. 33326  
 Tel: (954) 347-9987 Fax: (954) 217-3614


MARK	DATE	DESCRIPTION



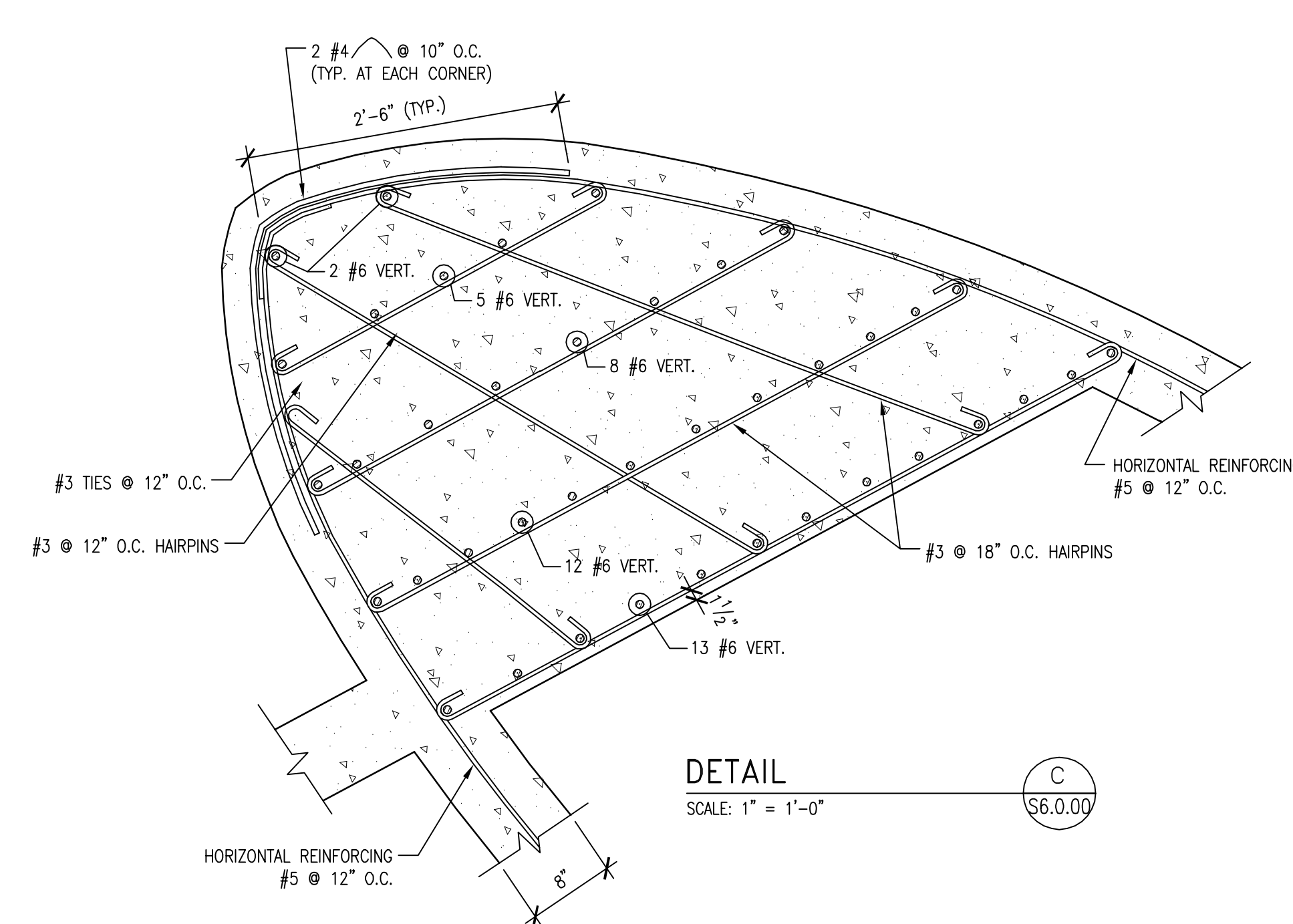
**FOUNDATION PLAN**  
 SCALE: 1/4" = 1'-0"  
 A S6.0.00

- NOTES:
- (A) 8" ONE WAY CONCRETE SLAB WITH #4 @ 12" O.C. TOP AND BOTTOM EACH WAY.
  - (B) 8" CONCRETE WALL WITH #4 @ 12" O.C. EACH WAY CENTERED. SEE DETAIL B/S6.0.01 FOR END WALL REINFORCING.
  - (C) 8" CONCRETE WALL WITH #5 @ 12" O.C. EACH WAY CENTERED.
  - (D) TOP OF PILE CAP ELEV. (-2'-0") TYPICAL U.O.N. THUS ( ).
  - (E) TOP OF GRADE BEAM ELEV. (-0'-8") TYPICAL U.O.N. THUS ( ).
  - (F) FOR DIMENSIONS NOT SHOWN REFER TO ARCHITECTURAL DRAWINGS.

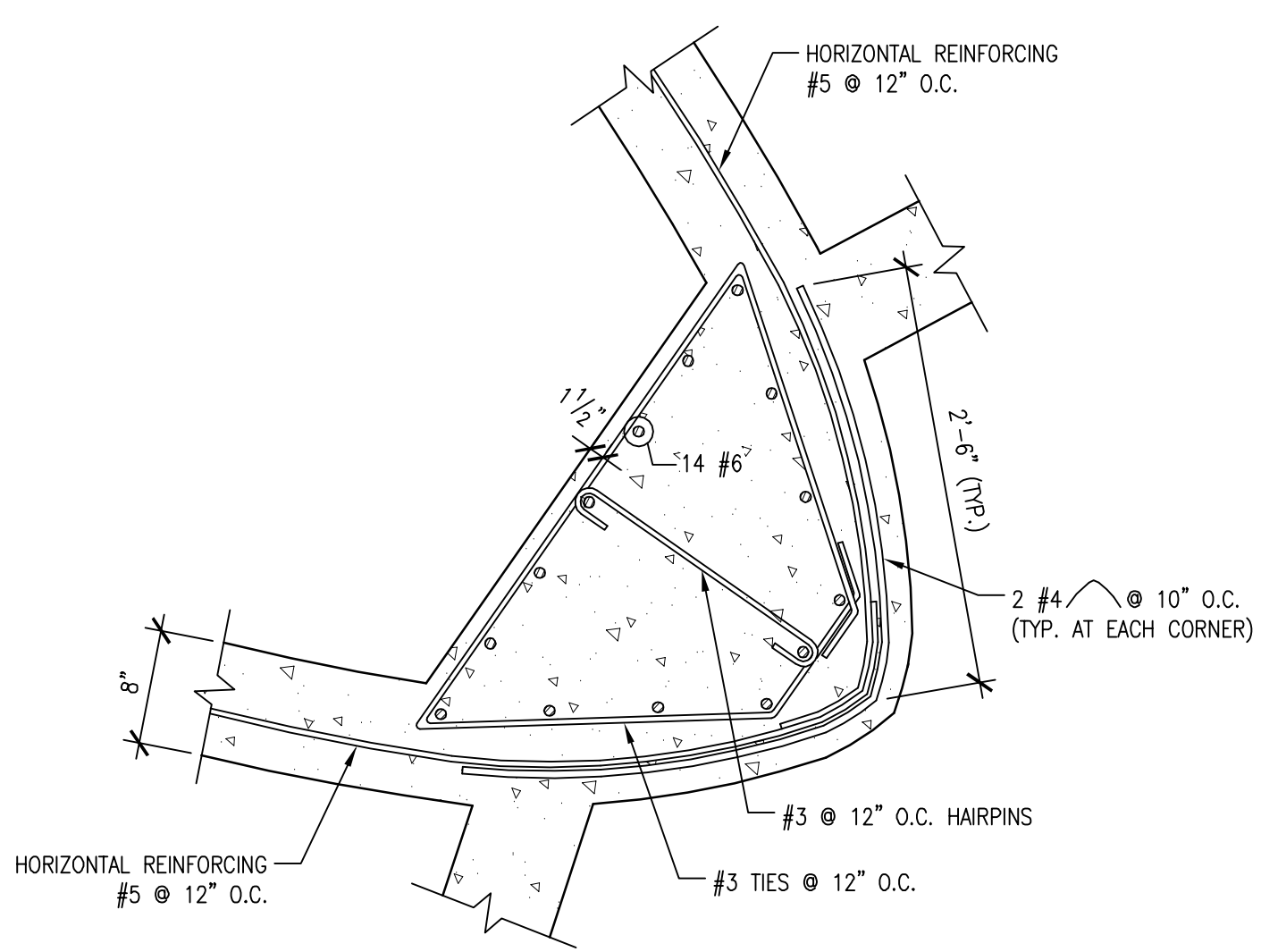


**SLAB AT EL. +12'-0" PLAN**  
 SCALE: 1/4" = 1'-0"  
 B S6.0.00

- NOTES:
- (1) 7" CONCRETE SLAB WITH #5 @ 12" O.C. TOP EACH WAY AND #4 @ 12" O/C BOTTOM EACH WAY. SEE PLAN FOR ADDITIONAL REINFORCING.
  - (2) 7 #6 BOTTOM IN 2'-6" BAND AS INDICATED ON PLAN.
  - (3) ADDITIONAL #5 TOP BARS @ 12" O/C.
  - (4) FOR DIMENSIONS NOT SHOWN REFER TO ARCHITECTURAL DRAWINGS.
  - (5) 8W4-48 SEE SECTION 8/S6.0.01.
- LEGEND:  
 ——— TOP REINFORCING.



**DETAIL C**  
 SCALE: 1" = 1'-0"  
 C S6.0.00



**DETAIL D**  
 SCALE: 1" = 1'-0"  
 D S6.0.00