



Town of Surfside

RFQ 2022-05

Construction of Town of Surfside 96th Street Park

Addendum No. 2

Date Issued: **September 6, 2022**

To All Proposers:

Proposers for the above-referenced RFP shall take note of the following changes, additions, deletions or clarifications to RFP No. 2022-05, which in accordance with the RFP Documents shall become a part of and have precedence over anything shown or described otherwise in the RFP.

THE FOLLOWING CHANGES ARE MADE TO THE RFP:

- 1. Please confirm this project does not require Miami Dade County Responsible Wages, nor any Government Mandated Wages.**

Not required.

- 2. Please confirm this project will not require Certified Payroll.**

Not required.

- 3. Please confirm the acceptable Workdays and Hours at the project site**

Monday to Friday from 8:00 AM – 6:00PM.

4. Please provide direct contact information for a Representative for DUCTAL (Pre-Cast Concrete System).

Premier Precast

Gosia Gajownik

Email: gosia@premierprecast.com

O: (561) 330-3737

5. Please confirm the Color and Texture Type for the DUCTAL Pre-Cast Concrete System.

Smooth texture, Color: White

6. Please confirm the scope of work for the Roller Window Shades (Window Treatments). Section 122413 of the Project Manual is in template form with no specific details or specifications.

a. Please confirm if the window treatment is to be shades, blackout shades, double shades, etc.

Window treatment to be Hunter Douglas Designer Roller Shades. Color: Perla Blanca ABA-101, 10% Translucency.

b. Please confirm what windows will take this window treatment.

Windows in the second floor community room will take window treatments. See updated plan A-1.3 REV B.

c. Please confirm what doors will take this window treatment.

No doors to take window treatments.

Responses have been included as a link under the RFP in the Town Clerk section of website.

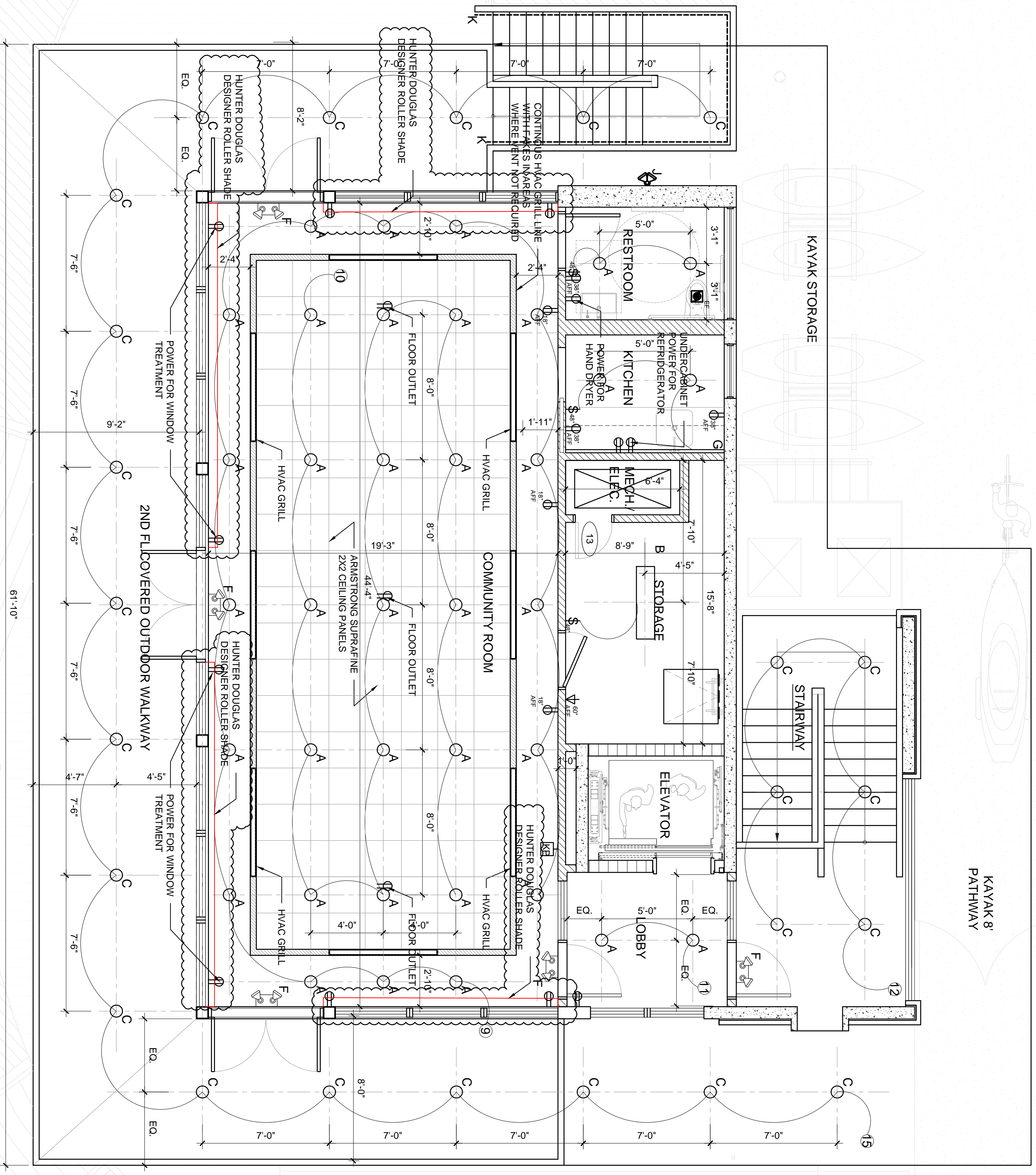
<https://www.townofsursidefl.gov/departments-services/finance/bids-and-rfps>

PROPOSER:

NAME: _____

TITLE: _____

DATE: _____



1 SECOND FLOOR REFLECTED CEILING PLAN
SCALE: 1/4" = 1'-0"

2ND FL. LIGHTING CONTROL SYSTEM KEYPAD CHART

CIRCUIT NUMBER	DESCRIPTION
9	COMMUNITY ROOM SOFFIT LIGHTING
10	COMMUNITY ROOM
11	2ND FLOOR ELEVATOR FOYER
12	2ND FLOOR NORTH STAIR
13	2ND FLOOR EXTERIOR OVERHANG

ELECTRICAL LEGEND

SYMBOL	TYPE	DESCRIPTION
[Symbol]	OUTLET	DUPLEX RECEPTACLE OUTLET 15A
[Symbol]	EF	ELECTRICAL PAN
[Symbol]	DATA	DATA OUTLET
[Symbol]	KP	KEYPAD
[Symbol]	A	RECESSED DOWNLIGHT
[Symbol]	B	CEILING HUNG LED PANEL
[Symbol]	C	EXTERIOR CONCRETE EMBED DOWNLIGHT
[Symbol]	D	LED RECTANGULAR RECESSED
[Symbol]	E	INTERIOR LED RECTANGULAR RECESSED
[Symbol]	F	EMERGENCY LIGHTING UNIT W/ EXIT SIGN
[Symbol]	G	LED UNDERCABINET STRIP LIGHT
[Symbol]	H	EXTERIOR RECESSED DOWNLIGHT
[Symbol]	J	EXTERIOR SPOTLIGHT

LIGHTING FIXTURE SCHEDULE

NOTE: ALL LIGHTING FIXTURES TO BE DIMMABLE

TYPE	DESCRIPTION	MANUFACTURER	MODEL NUMBER	MODEL LINE	LAMPS	QTY	TYPE	VOLTS	WATTS	FINISH	MOUNTING	REMARKS
A	3" Ø LED DOWNLIGHT	LUMENTURE	DL75 3SH 40 W R U 300		LED - 3500 K	120	12.5W	120	12.5W	WHITE	RECESSED	INTERIOR
B	1'x4' RECTANGULAR LED PANEL	TRACE LITE	LPA 1 WH UD		LED - 3500 K	120	29W	120	29W	WHITE ENAMEL	RECESSED	INTERIOR
C	4" RECESSED LED DOWNLIGHT	DMF	DH4H-N-JC		LED - 3500 K	120	29W	120	29W	WHITE ENAMEL	RECESSED	EXTERIOR
D	2'x2' SQUARE LED PANEL	TECHOLED	TECHOLED-2-2-25-U-40D-L-W		LED - 3500K	120	32W	120	32W	WHITE ENAMEL	RECESSED	EXTERIOR
E	5' LENGTH - LINEAR RECESSED	ZUWTOBEL	SL314FL4808P940UW		LED - 3500K	120	38.8W	120	38.8W	WHITE	RECESSED	EXTERIOR
F	LED COMBO EXIT/EMERGENCY	ASTRALITE INC.	EEU-2-16-LED-R-W		LED - 3500K	16W	5W LV/FT	120	38.8W	WHITE	SURFACE MOUNT	UNDER MOUNT
G	LED STRIP LIGHT	LUMIRON	HIGH POWER WARM LED		LED - 3500K	120	38.8W	120	38.8W	WHITE	RECESSED	EXTERIOR
H	6' LENGTH - LINEAR RECESSED	ZUWTOBEL	SL314FL4808P940UW		LED - 3500K	120	38.8W	120	38.8W	WHITE	RECESSED	EXTERIOR
J	EXTERIOR SPOTLIGHT	WAC LIGHTING	WP-LED415		LED - 3500 K	13W	13W	13W	13W	WHITE ENAMEL	WALL MOUNT	EXTERIOR
K	EXTERIOR HANDRAIL LIGHTING	ALDABRA	VEGA		LED - 3500 K	13W	13W	13W	13W	ALUMINIUM	RAIL	EXTERIOR

SURFSIDE 96TH ST PARK
TOWN OF SURFSIDE
9580 BAY DRIVE
SURFSIDE, FL 33154

WILLIAM LANE ARCHITECT, INC.
1480 MARSEILLE DR.
MIAMI BEACH, FLORIDA 33141
TELEPHONE: 305 865 7830

william lane architects inc.

WILLIAM LANE ARCHITECT, INC.
1480 MARSEILLE DR.
MIAMI BEACH, FLORIDA 33141
TELEPHONE: 305 865 7830

savinomiller
DESIGN STUDIO
LANDSCAPE ARCHITECTURE | URBAN DESIGN | ARCHITECTURE

12345 N.E. 6TH AVENUE, #A | NORTH MIAMI, FLORIDA | 33140
T. 305.895.9082 | F. 305.895.9083 | WWW.SAVINOMILLER.COM
AA0002463 | LCC000208

DATE: 06.24.2022
SCALE: 1/4" = 1'-0"
SHEET TITLE: SECOND FLOOR REFLECTED CEILING PLAN
PERMIT SET

REVISIONS: _____
REV: _____
BY: _____

SEAL: _____
TITLE: _____
DATE: _____

REGISTERED ARCHITECT
STATE OF FLORIDA
WILLIAM LANE ARCHITECT, INC.
ARCHITECT
NO. 14428

SHEET: A-1.3