

## HOW DOES THE TOWN PROTECT OUR ECOSYSTEMS?

### SKIP THE STRAW & POLYSTYRENE BAN

To keep our marine life safe and our ocean debris free, we've eliminated the use of plastic straws in our commercial establishments (No. 2018-1690). Additionally, the Town has banned the use and sale of polystyrene food service items. Polystyrene is commonly known as Styrofoam, which can break down into harmful non-biodegradable pieces that can pollute our waterways and poison wildlife.



### FLIPPING THE SWITCH ON LIGHTING

The Town also adopted proposed lighting regulations from the Florida Department of Environmental Protection and Florida Wildlife Conservation

Commission. A \$250 Code Compliance daily fine may be issued for lighting violations.

For questions, contact Code Compliance at 305-861-4863, ext. 233.



**A note about our artist.** Natasha De Mier, Surfside resident and sixth-grader at Ruth K. Broad Bay Harbor K-8 Center School created the artwork and slogan seen here. She won the Spring 2021 Surfside Anti-Litter Contest to raise awareness of what harmful debris and trash can do to our waterways and ecosystem, especially our resident sea turtle population.



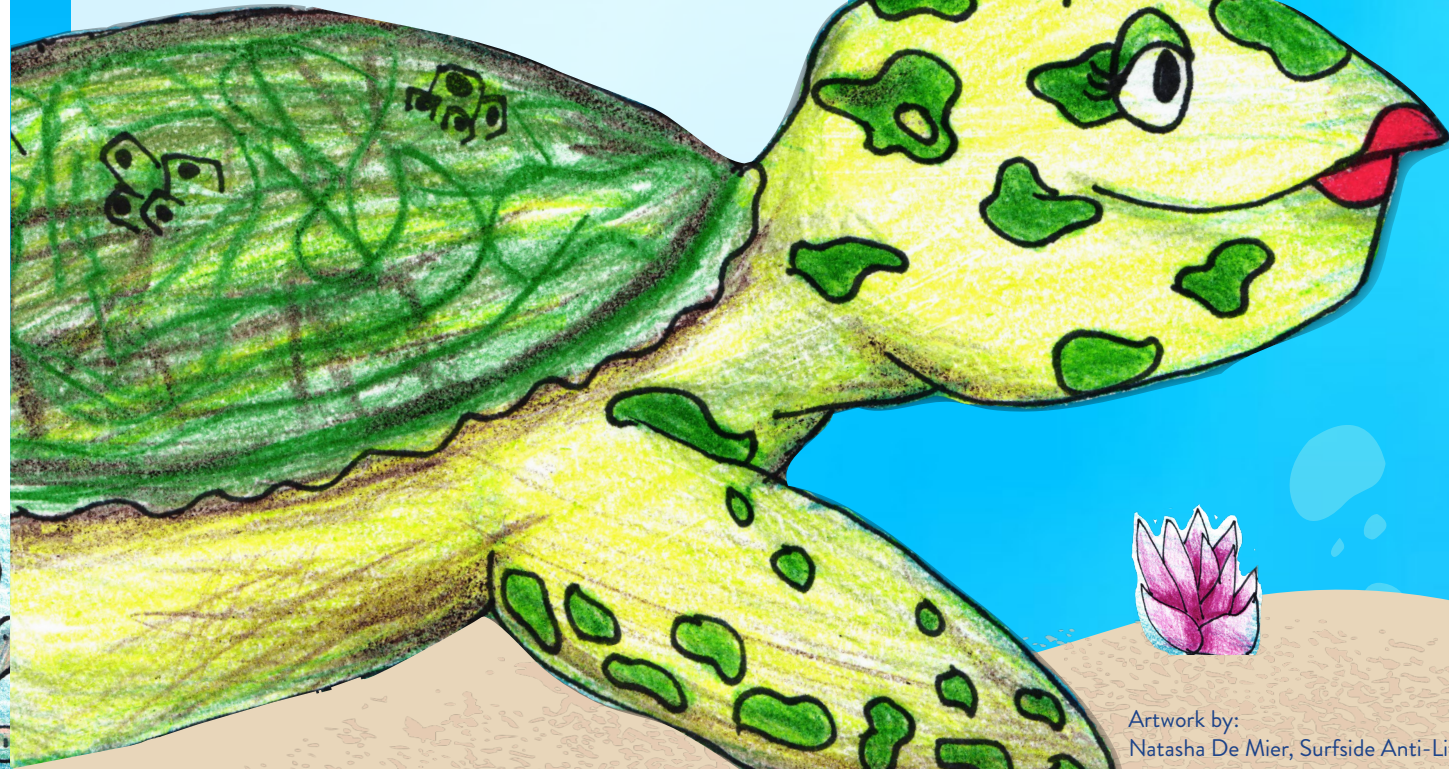
# Don't Litter, Save the Critters!

### KEEP IT CLEAN

A clean beach is every person's responsibility. Surfside's pristine shoreline is the Town's most beloved natural asset. Litter and plastics often end up becoming marine debris thus presenting a very real threat to the local marine ecosystem.

Thanks to the Town's new Fill A Bag stations, cleaning the beach is now easier than ever—simply locate one of the branded posts on the beach path, grab your bag and go!

**Always remember this golden rule: Leave nothing behind but your footprints.** Learn more at [townofsurfsidefl.gov](http://townofsurfsidefl.gov).



Artwork by:  
Natasha De Mier, Surfside Anti-Litter Artwork Winner

Surfside  
FLORIDA

# UPTOWN TURTLE TOWN



## WHICH TURTLES CALL SURFSIDE HOME?

Five different types of sea turtles can be found up and down Florida's coasts, and three of those species pay a visit to Surfside's beaches each year.

Florida conducts an annual survey of sea turtle nesting activity across the state, identifying areas for additional protection for our beloved sea turtles.

Learn more about our most common neighbors here.

### GREEN SEA TURTLE



Consumes mostly vegetables  
Average Weight: 350 lb.  
Average Shell Length: 3.3 ft.

### LOGGERHEAD TURTLE



Most common in Florida  
Average Weight: 275 lb.  
Average Shell Length: 3 ft.

### LEATHERBACK TURTLE



Can dive to >3,000 ft.  
Weighs up to 1,500 lb.  
Average Length: 6 ft.

In addition to being a beautiful coastal community, did you know the Town of Surfside's public beach serves as an important nesting area for these creatures and other marine wildlife. Sea turtle nesting season typically takes place from **May 1 to October 31**.

### SEA TURTLE THREATS & CHALLENGES

Given that loggerheads are slow growing, long-lived animals that are unable to mate until they are 35 years old, we must all do our part to ensure they are able to nest safely and reach adulthood. These turtles spend the majority of their time in the ocean with females only coming ashore to nest. After mating at sea, females come to shore a few times during the nesting season, dig a burrow in the sand, and lay 100-120 eggs each time. After several weeks, loggerhead hatchlings emerge from the nest and enter the water together.

The loggerhead sea turtle is protected as a Threatened species by the Federal Endangered Species Act and as a federally designated Threatened species by Florida's Endangered and Threatened Species Rule, and by Florida's Marine Turtle Protection Act (379.2431, Florida Statutes). According to the National Oceanic

and Atmospheric Administration (NOAA), increasing pollution of nearshore and offshore marine habitats threatens all sea turtles. Loggerhead turtles may die after ingesting fishing line, plastic bags and debris, floating tar or oil, and other materials discarded by humans, which they can mistake for food. Sea turtle nests are also vulnerable to tampering by humans and animals.

### STEP UP! JOIN CONSERVATION EFFORTS

All Surfside residents and visitors can play a crucial role in helping to protect our sea turtles. Here's how:

- **Nesting** - Never touch or disturb nesting sea turtles, hatchlings, or their nests. To report a dead or injured sea turtle, call 1-888-404-FWCC.
- **On the Sand** - Fill in holes and knock down sand castles, which may obstruct a sea turtle's path to the water.
- **Lighting** - Upon hatching, sea turtles instinctively seek the moonlight to guide them towards



the ocean. Safe lighting practices are essential to ensure hatchlings do not become confused and head in the opposite direction toward potential danger.

### Beachfront residents and hotel guests should:

- Not use flashlights, lanterns or flash photography while on the beach at night during nesting season.
- Remove all items, such as beach chairs and trash, from the beach at night.
- Minimize the use of direct artificial lighting from properties located along the beach as light pollution disorients nesting adults and hatchlings.
- Turn off, dim or shield outdoor and indoor lights and move lamps that can reflect light onto the beach.
- Close drapes and blinds at night that face the ocean on the east and west sides of Collins Avenue.
- Tint or install tinted windows with line-of-sight from the beach.